

## Commercial Development Land

PROPERTY TYPE	Development Land
ZONING	AG
LAND SIZE	4.70 acres
PRICE	\$915,000
UTILITIES	Available
COMP PLAN	Commercial

- Ideal multifamily or commercial development parcel
- 25 units / acre allowed per City of Caldwell Comp Plan
- Fantastic access to amenities, grocery, and schools
- Opportunity to provide much needed housing in Caldwell
- Less than 2 miles from C of I campus
- Commercial uses permitted include C-store, auto, medical, retail, or bank

This information, while not guaranteed, is from sources we believe to be reliable.  
This data is subject to price change, corrections, errors, omissions, prior sale, and/or withdrawal.



**208.761.0924 | [brian@rallensrealty.com](mailto:brian@rallensrealty.com)**

**208.283.0193 | [jp@rallensrealty.com](mailto:jp@rallensrealty.com)**

**rallensrealty.com**

**RALLENS REALTY CONSULTANTS | 1520 W WASHINGTON ST BOISE, ID 83702 | 208.926.6366**

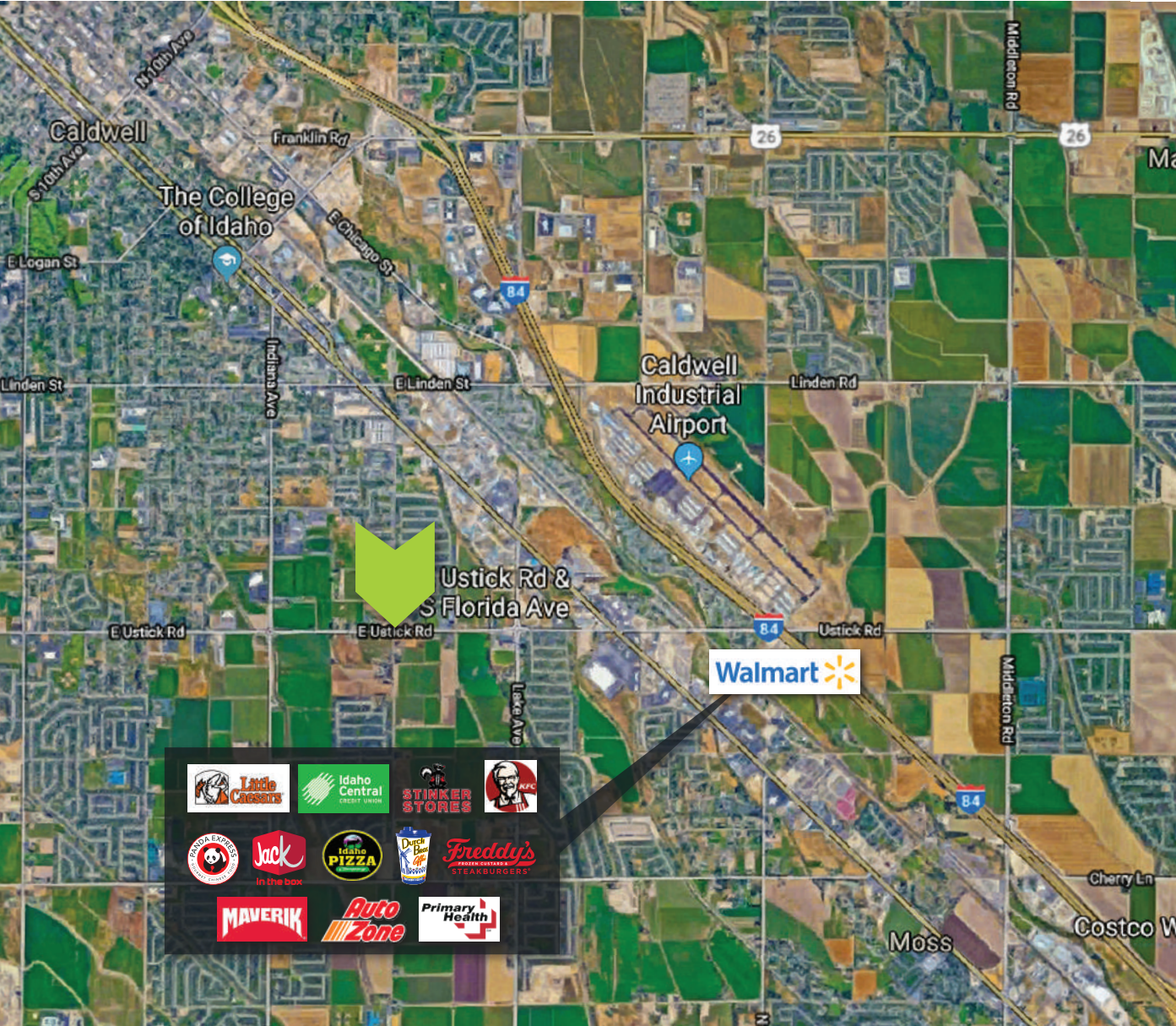


**4125 S FLORIDA AVE** Caldwell, ID 83607



**RALLENS REALTY**  
CONSULTANTS

## Commercial Development Land



This information, while not guaranteed, is from sources we believe to be reliable.  
This data is subject to price change, corrections, errors, omissions, prior sale, and/or withdrawal.

**BRIAN RALLENS**  
208.761.0924 | [brian@rallensrealty.com](mailto:brian@rallensrealty.com)

**JP SACT**  
208.283.0193 | [jp@rallensrealty.com](mailto:jp@rallensrealty.com)

**BRIAN RALLENS**  
208.761.0924 | [brian@rallensrealty.com](mailto:brian@rallensrealty.com)

**JP SACT**  
208.283.0193 | [jp@rallensrealty.com](mailto:jp@rallensrealty.com)

**BRIAN RALLENS**  
208.761.0924 | [brian@rallensrealty.com](mailto:brian@rallensrealty.com)

**JP SACT**  
208.283.0193 | [jp@rallensrealty.com](mailto:jp@rallensrealty.com)

**BRIAN RALLENS**  
208.761.0924 | [brian@rallensrealty.com](mailto:brian@rallensrealty.com)

**JP SACT**  
208.283.0193 | [jp@rallensrealty.com](mailto:jp@rallensrealty.com)

**rallensrealty.com**



**4125 S FLORIDA AVE** Caldwell, ID 83607



**RALLENS REALTY**  
CONSULTANTS



This information, while not guaranteed, is from sources we believe to be reliable.  
This data is subject to price change, corrections, errors, omissions, prior sale, and/or withdrawal.

**BRIAN RALLENS**

208.761.0924 | [brian@rallensrealty.com](mailto:brian@rallensrealty.com)

**JP SACHT**

208.283.0193 | [jp@rallensrealty.com](mailto:jp@rallensrealty.com)

**rallensrealty.com**