

# OWYHEE COUNTY GRAZING GROUND

Sections 16 & 36, Township 9 South, Range 10E

FOR SALE



## PROPERTY INFORMATION

<b>PROPERTY TYPE</b>	Agriculture
<b>LAND SIZE</b>	1280 Acres (2 sections)
<b>PRICE</b>	\$985,000 (\$770/acre)

## HIGHLIGHTS

- Excellent winter grazing ground
- Section 36 fully fenced
- Section 16 half fenced
- Crested wheat on property
- 14" well caps on each section from previously drilled wells
- Perfect addition for Camas Prairie ranches or others seeking lower grazing area
- Mineral rights included
- Fully surrounded by BLM land
- Unit 46 Game Management Unit, South Hills
- Water delivery co-op shares available for purchase

This information, while not guaranteed, is from sources we believe to be reliable.  
This data is subject to price change, corrections, errors, omissions, prior sale, and/or withdrawal.



**BRIAN RALLENS**

208.761.0924 | [brian@rallensrealty.com](mailto:brian@rallensrealty.com)

**JP SACTH**

208.283.0193 | [jp@rallensrealty.com](mailto:jp@rallensrealty.com)

[rallensrealty.com](https://rallensrealty.com)

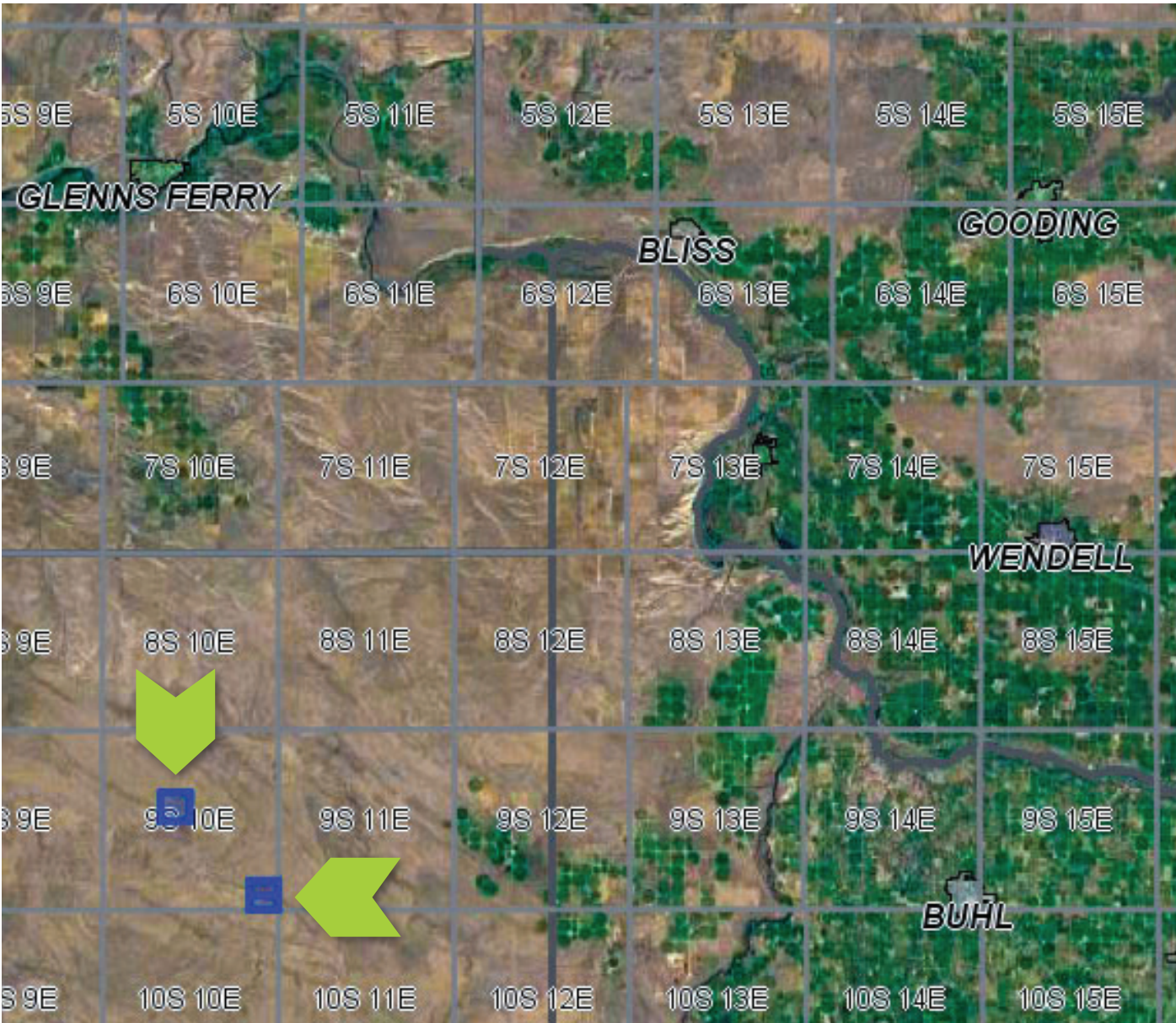
RALLENS REALTY CONSULTANTS | 1520 W WASHINGTON ST BOISE, ID 83702 | 208.926.6366



# OWYHEE COUNTY GRAZING GROUND



**rallensrealty.com**



<p><b>BRIAN RALLENS</b></p> <p>208.761.0924   <a href="mailto:brian@rallensrealty.com">brian@rallensrealty.com</a></p>	<p><b>JP SACHT</b></p> <p>208.283.0193   <a href="mailto:jp@rallensrealty.com">jp@rallensrealty.com</a></p>
--	---

<p><b>BRIAN RALLENS</b></p> <p>208.761.0924   <a href="mailto:brian@rallensrealty.com">brian@rallensrealty.com</a></p>	<p><b>JP SACHT</b></p> <p>208.283.0193   <a href="mailto:jp@rallensrealty.com">jp@rallensrealty.com</a></p>
--	---



# OWYHEE COUNTY GRAZING GROUND



This information, while not guaranteed, is from sources we believe to be reliable.  
This data is subject to price change, corrections, errors, omissions, prior sale, and/or withdrawal.

**BRIAN RALLENS**

208.761.0924 | [brian@rallensrealty.com](mailto:brian@rallensrealty.com)

**JP SACHT**

208.283.0193 | [jp@rallensrealty.com](mailto:jp@rallensrealty.com)

[rallensrealty.com](http://rallensrealty.com)