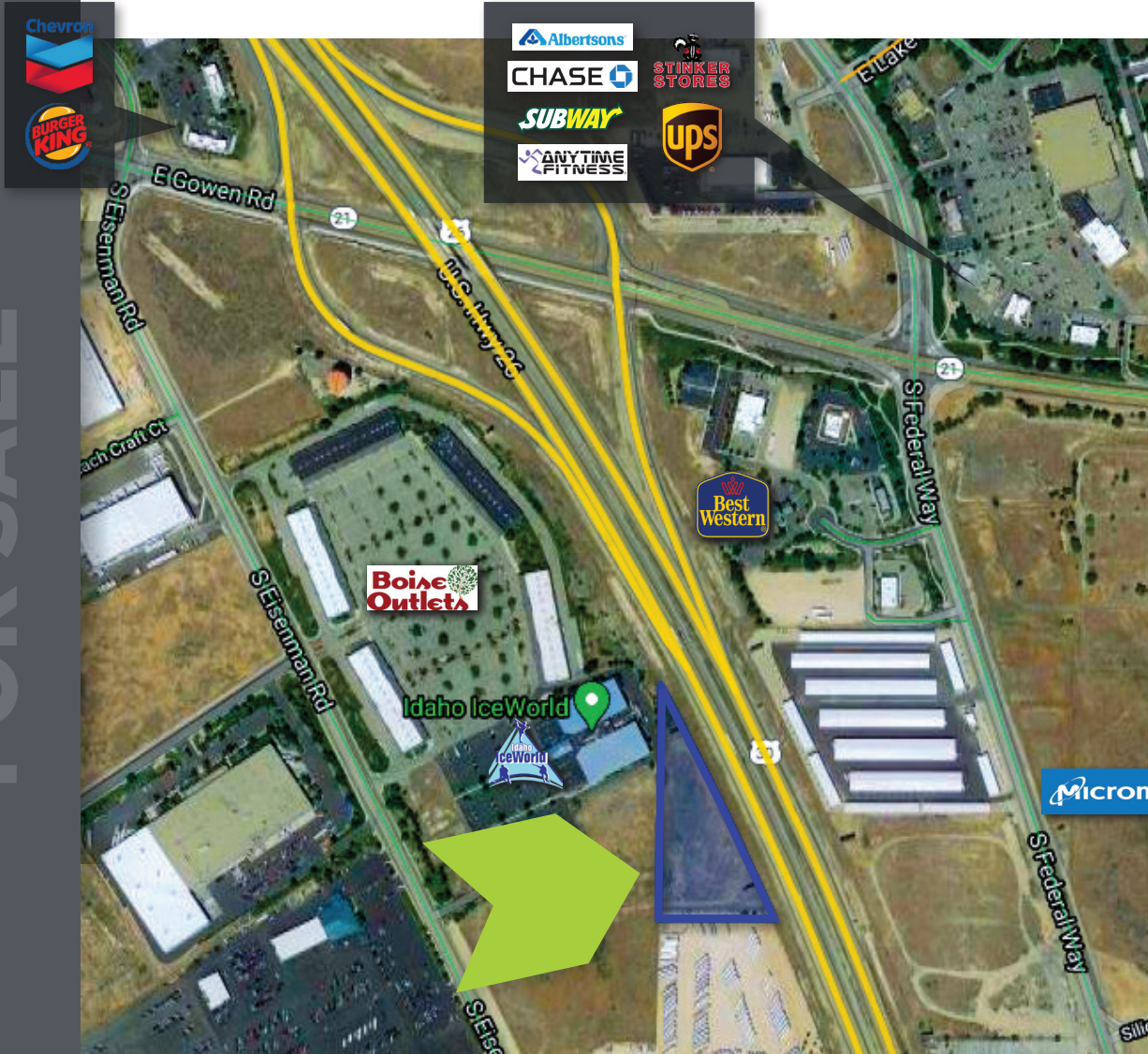


7090 S EISENMAN ROAD Boise, Idaho 83716

Industrial Land

FOR SALE



PROPERTY INFORMATION

LOCATION	I-84 Exit 57, W on Gowen Rd, S on Eisenman Rd
PROPERTY TYPE	Industrial Land
ZONING	M-ID
LAND SIZE	±2.86 acres
GROUND LEASE	Contact Agent
PRICE	Contact Agent

HIGHLIGHTS

- Adjacent to Idaho Ice World
- Excellent I-84 frontage and visibility
- Seller does not own the billboards located on the property

This information, while not guaranteed, is from sources we believe to be reliable.
This data is subject to price change, corrections, errors, omissions, prior sale, and/or withdrawal.



BEN FULCHER

208.859.7407 | ben@rallensrealty.com

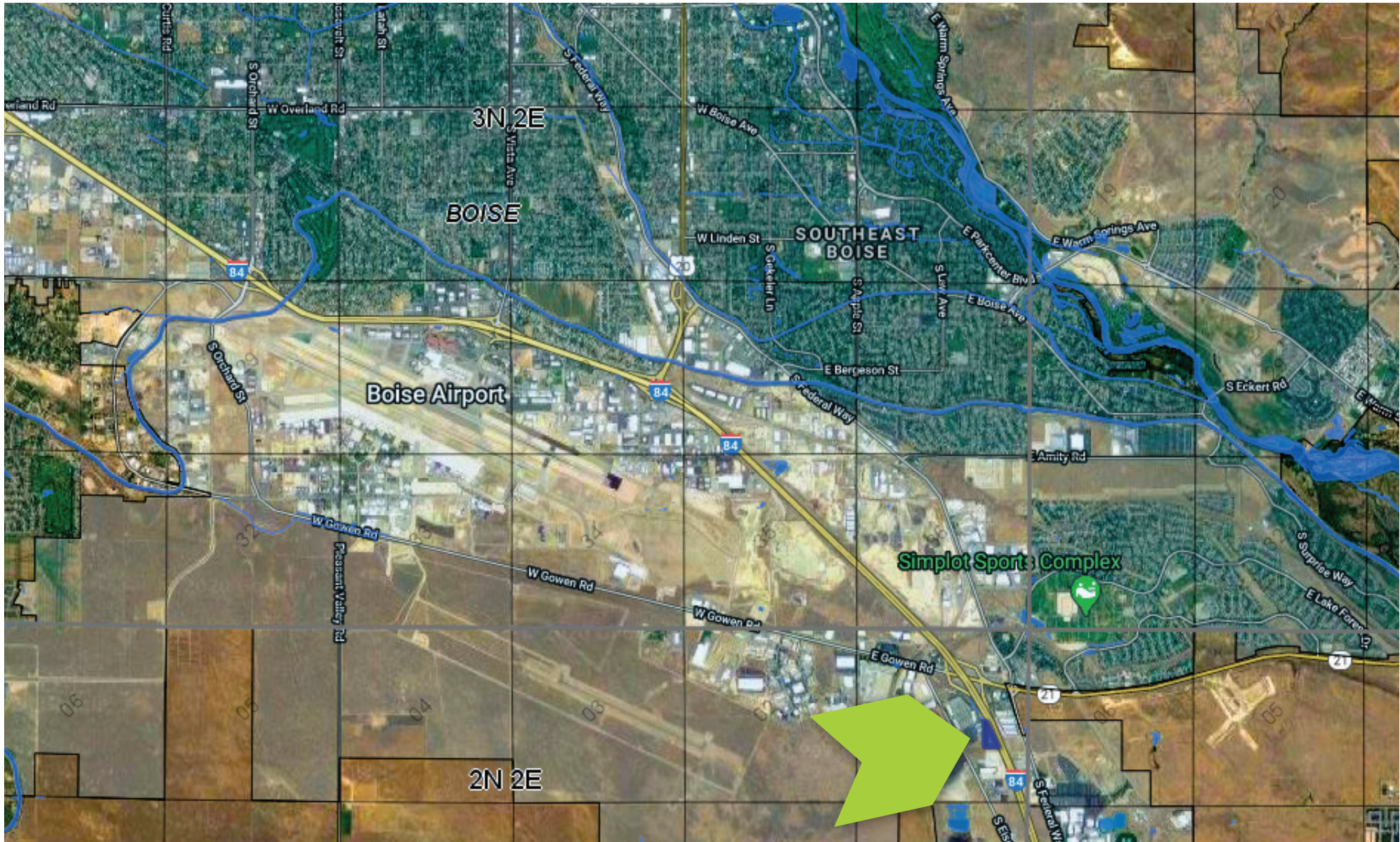
RALLENS REALTY CONSULTANTS | 1520 W WASHINGTON ST BOISE, ID 83702 | 208.996.1055

rallensrealty.com

7090 S EISENMAN ROAD Boise, Idaho 83716



RALLENS REALTY
CONSULTANTS



BEN FULCHER

208.859.7407 | ben@rallensrealty.com

rallensrealty.com