

**606 E 43RD ST** Garden City, ID 83714

**Industrial Property**

FOR LEASE



### PROPERTY INFORMATION

<b>PROPERTY TYPE</b>	Industrial Property
<b>LEASE RATE</b>	<b>\$3500 / month NNN</b>
<b>ZONING</b>	C-2
<b>ACRES</b>	.69 acres
<b>BUILDING SIZE</b>	2,016 SF

### HIGHLIGHTS

- Rare industrial leasing opportunity in central Garden City
- Fully-fenced, graded lot with 30-ft gated entrance
- 2,106 SF shop building with two roll-up doors and a barn-style swinging door
- C-2 zoning will allow for a variety of commercial and industrial uses

This information, while not guaranteed, is from sources we believe to be reliable.  
This data is subject to price change, corrections, errors, omissions, prior sale, and/or withdrawal.



**BEN FULCHER**

208.859.7407 | [ben@rallensrealty.com](mailto:ben@rallensrealty.com)

**rallensrealty.com**

RALLENS REALTY CONSULTANTS | 1520 W WASHINGTON ST BOISE, ID 83702 | 208.926.6366



**606 E 43RD ST** Garden City, ID 83714



**RALLENS REALTY**  
CONSULTANTS



This information, while not guaranteed, is from sources we believe to be reliable.  
This data is subject to price change, corrections, errors, omissions, prior sale, and/or withdrawal.

**BEN FULCHER**

208.859.7407 | [ben@rallensrealty.com](mailto:ben@rallensrealty.com)

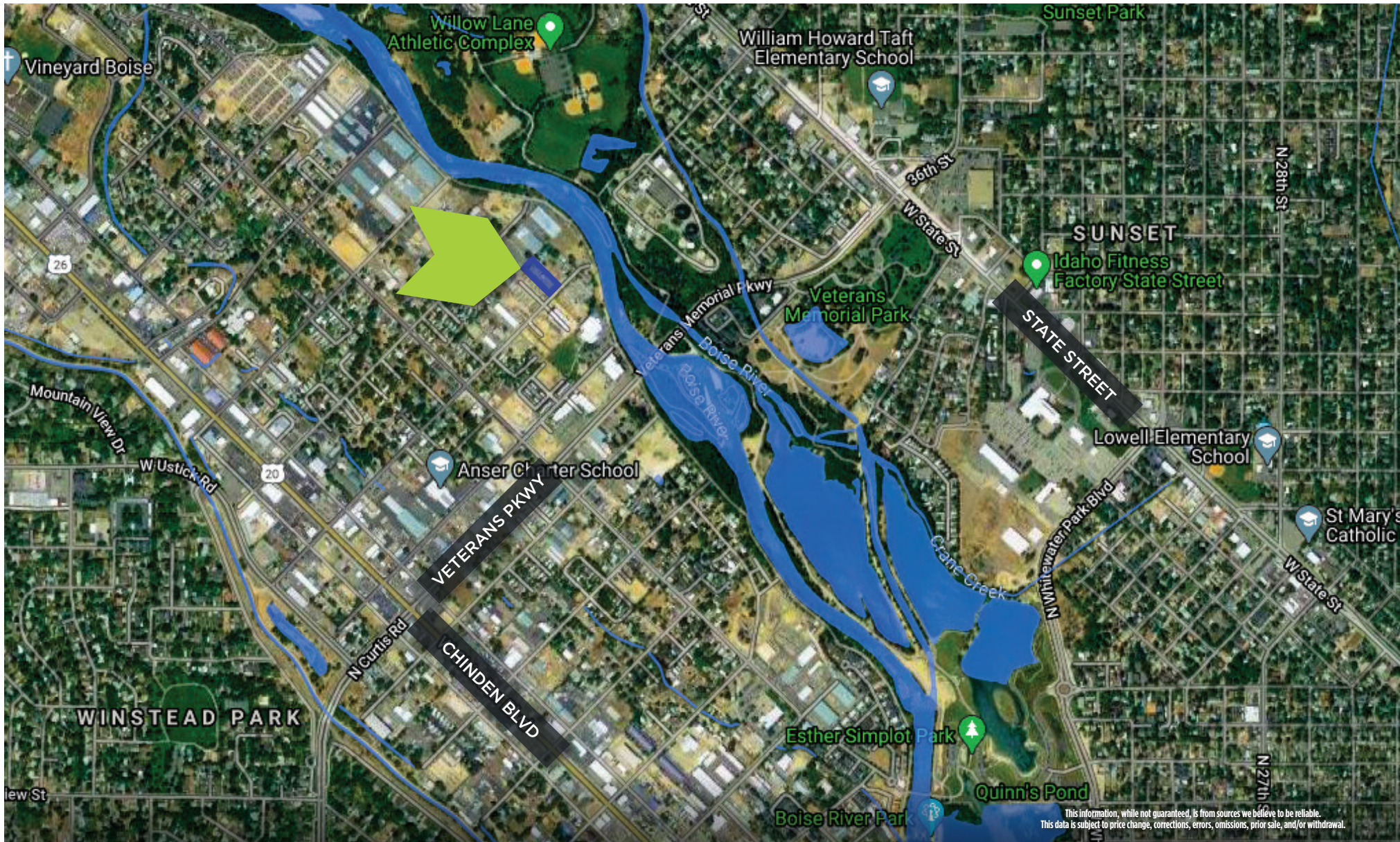
[rallensrealty.com](http://rallensrealty.com)



**606 E 43RD ST** Garden City, ID 83714



**RALLENS REALTY**  
CONSULTANTS



This information, while not guaranteed, is from sources we believe to be reliable. This data is subject to price change, corrections, errors, omissions, prior sale, and/or withdrawal.

**BEN FULCHER**

208.859.7407 | [ben@rallensrealty.com](mailto:ben@rallensrealty.com)

[rallensrealty.com](https://rallensrealty.com)