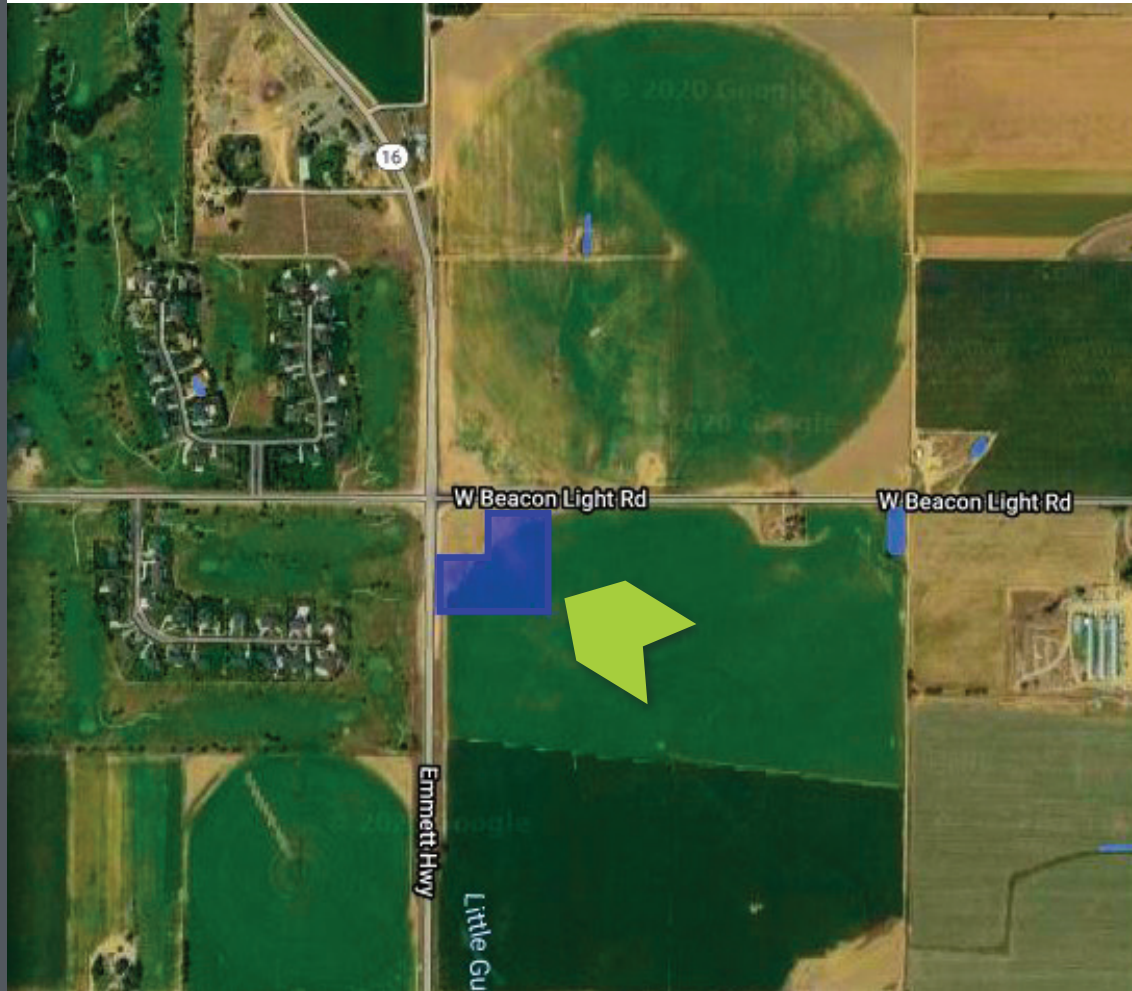


TBD W BEACON LIGHT RD Eagle, ID 83616

Commercial Development Land

FOR SALE



PROPERTY INFORMATION

PROPERTY TYPE	Commercial Development Land
ZONING	Currently Obtaining Commercial Zone
LAND SIZE	±7.5 acres
PRICE	Contact Agent
UTILITIES	Septic, Well
FRONTAGE	Highway 16 & Beacon Light
TRAFFIC COUNTS	14,963 VPD (7/2019) Highway 16 N of Beacon Light

HIGHLIGHTS

- Rare Eagle location for commercial development
- Most accessible commercial corner in long-term Highway 16 corridor plan
- Excellent visibility with 650 feet of Highway 16 frontage
- Development anchored by fantastic tenant
- Surrounded by incredible valley growth and forthcoming residential developments

This information, while not guaranteed, is from sources we believe to be reliable. This data is subject to price change, corrections, errors, omissions, prior sale, and/or withdrawal.



BRIAN RALLENS

208.761.0924 | brian@rallensrealty.com

JP SACTH

208.283.0193 | jp@rallensrealty.com

rallensrealty.com

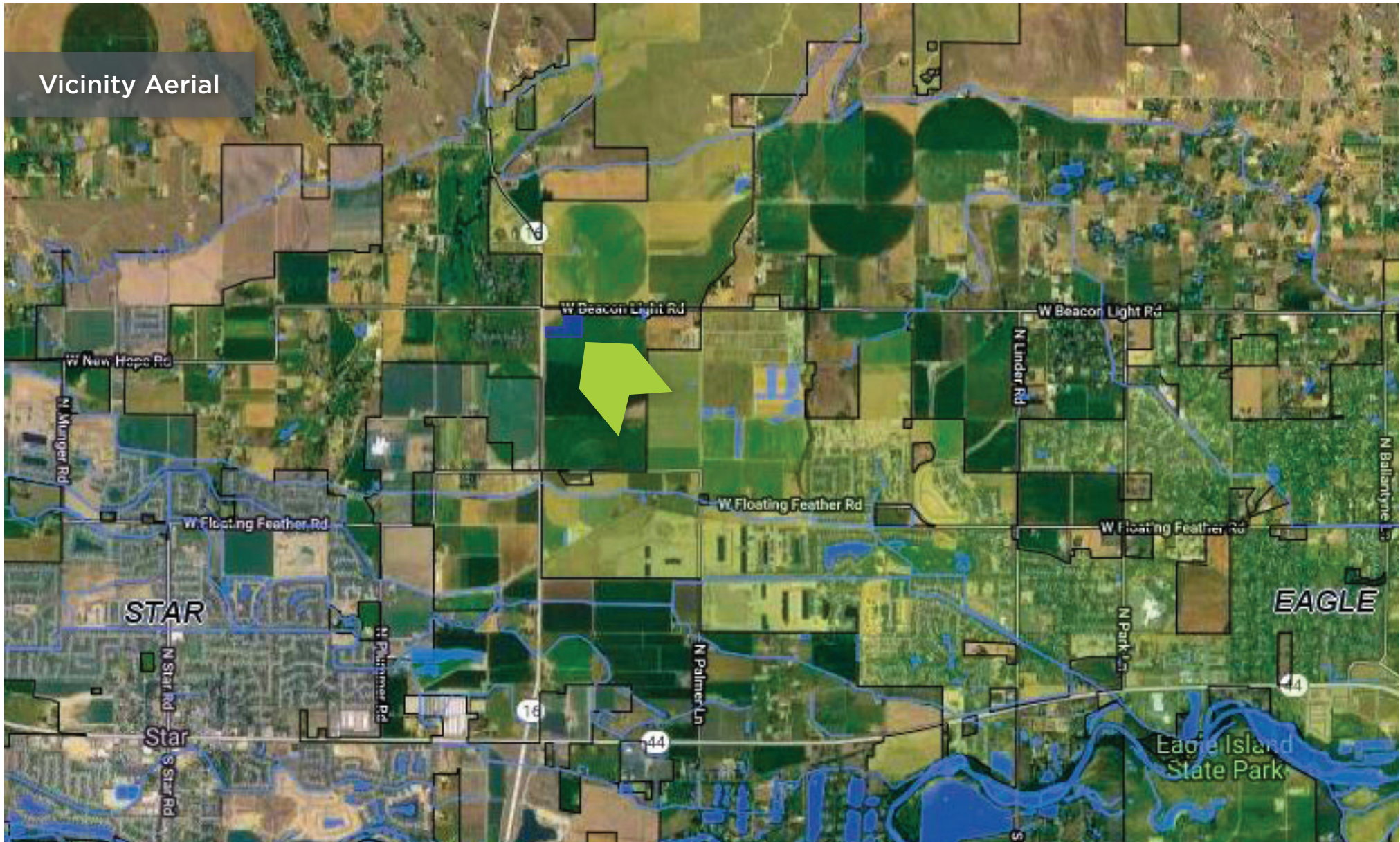
RALLENS REALTY CONSULTANTS | 1520 W WASHINGTON ST BOISE, ID 83702 | 208.996.1055

TBD W BEACON LIGHT RD Eagle, ID 83616



RALLENS REALTY
CONSULTANTS

Vicinity Aerial



BRIAN RALLENS

208.761.0924 | brian@rallensrealty.com

JP SACHT

208.283.0193 | jp@rallensrealty.com

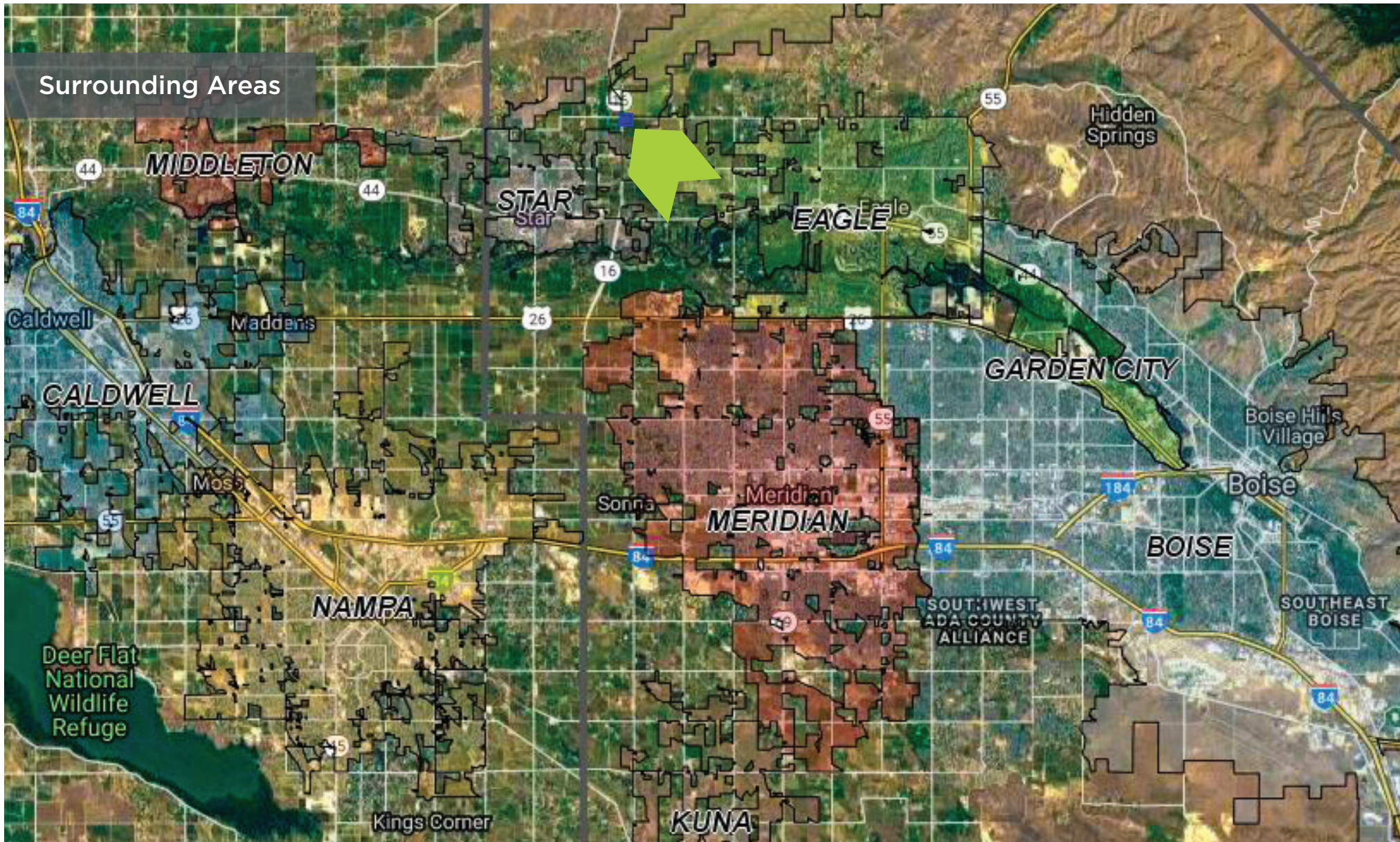
rallensrealty.com

TBD W BEACON LIGHT RD Eagle, ID 83616



RALLENS REALTY
CONSULTANTS

Surrounding Areas



BRIAN RALLENS

208.761.0924 | brian@rallensrealty.com

JP SACTH

208.283.0193 | jp@rallensrealty.com

rallensrealty.com