

FOR SALE



PROPERTY INFORMATION

PROPERTY TYPE	Residential Development Land
ZONING	Planned Community in Boise Comp Plan
LAND SIZE	±30.75 acres
PRICE	\$1,845,000 (\$60,000/acre)

HIGHLIGHTS

- Amazing location in hot development area between Boise, Meridian, and Kuna
- Designated as Planned Community in the Boise Comp Plan
- Easy access to the interstate and downtown
- Convenient access to amenities
- Located between Boise Ranch and Falcon Crest golf course
- City of Boise Sewer at Columbia and Cloverdale

This information, while not guaranteed, is from sources we believe to be reliable. This data is subject to price change, corrections, errors, omissions, prior sale, and/or withdrawal.



BRIAN RALLENS

208.761.0924 | brian@rallensrealty.com

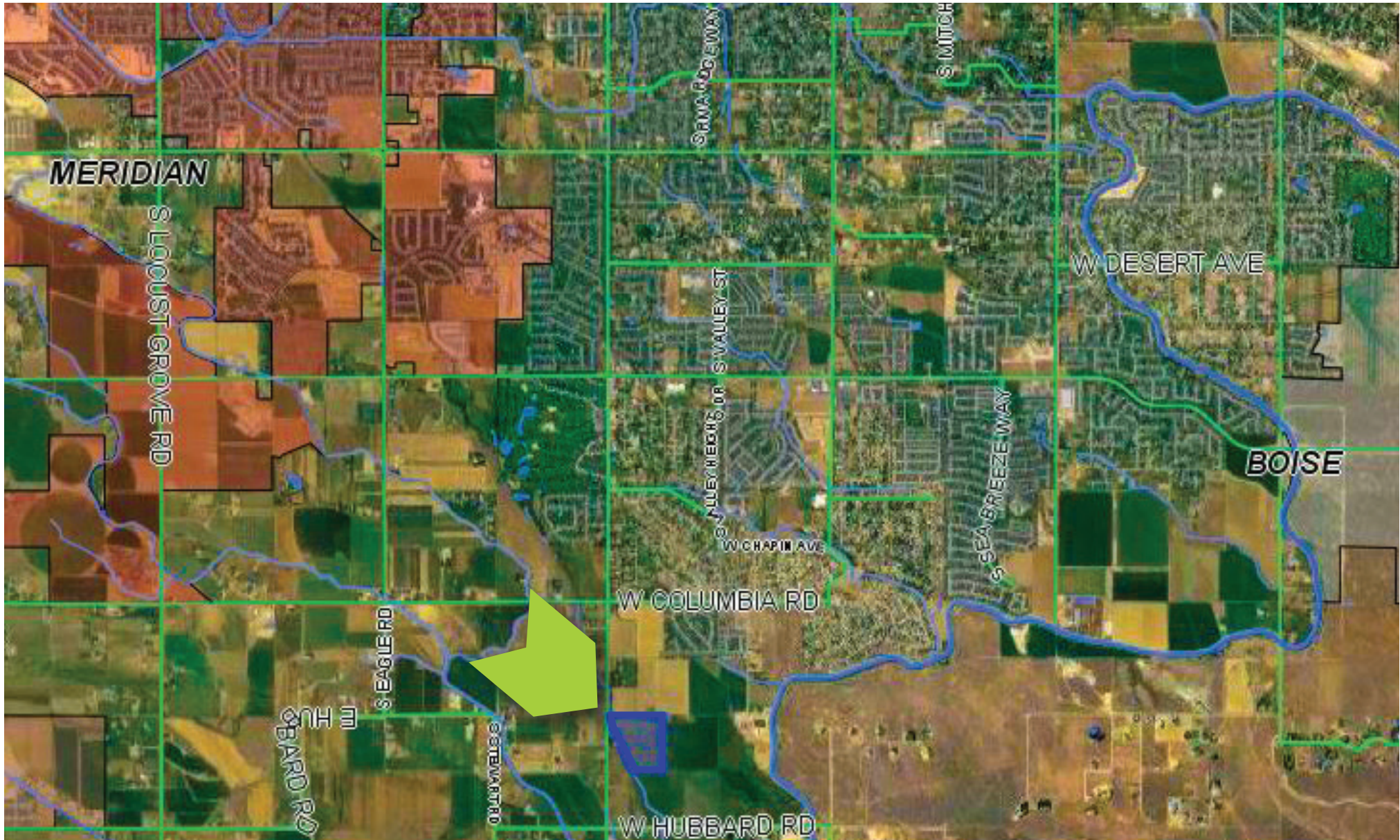
JP SACTH

208.283.0193 | jp@rallensrealty.com

rallensrealty.com

TBD S CLOVERDALE RD Boise, ID 83709

RALLENS REALTY
CONSULTANTS



BRIAN RALLENS

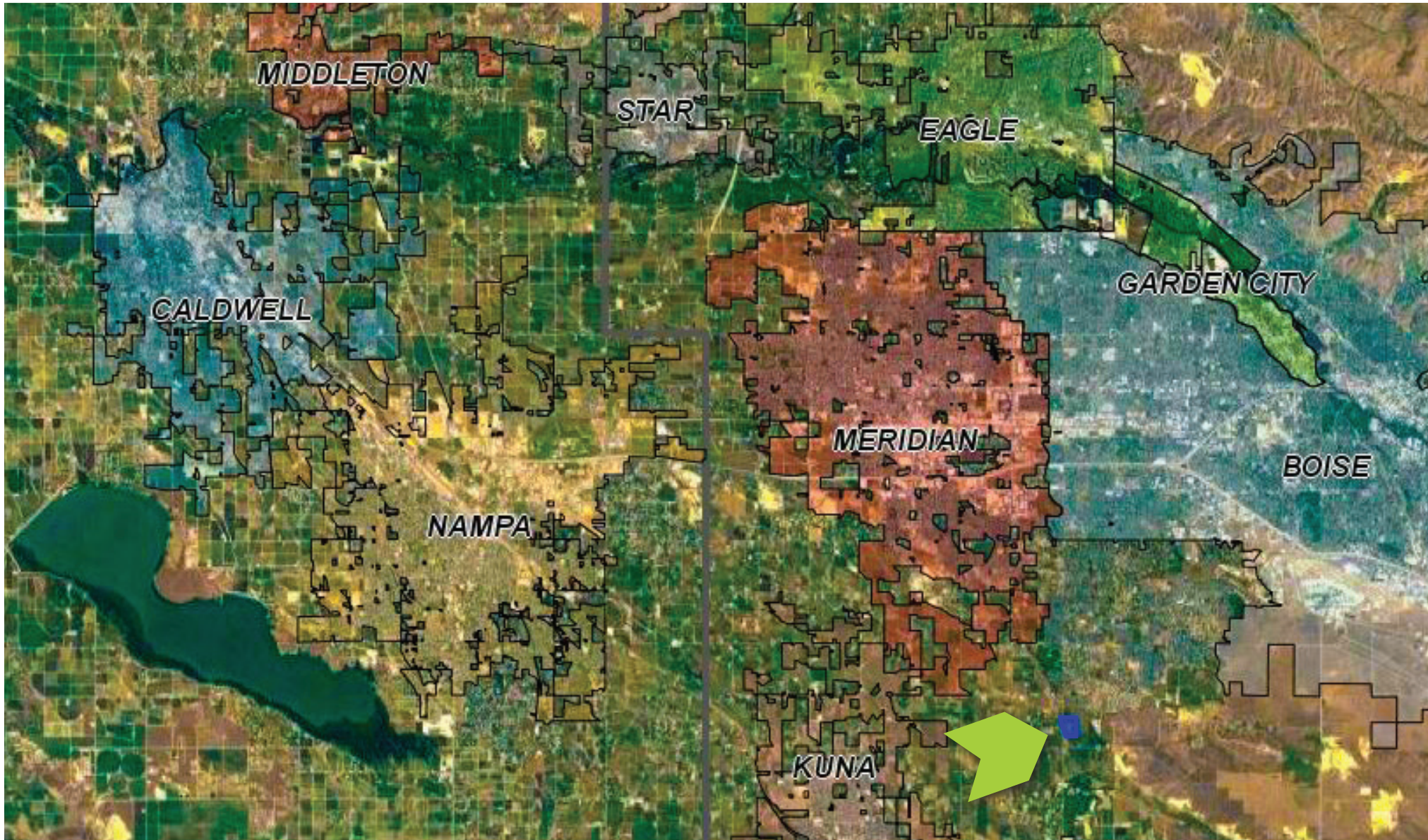
208.761.0924 | brian@rallensrealty.com

JP SACHT

208.283.0193 | jp@rallensrealty.com

rallensrealty.com

TBD S CLOVERDALE RD Boise, ID 83709



BRIAN RALLENS

208.761.0924 | brian@rallensrealty.com

JP SACTH

208.283.0193 | jp@rallensrealty.com

rallensrealty.com