

7545 W LEMHI ST Boise, ID 83709

Industrial Building

FOR SALE



PROPERTY INFORMATION

PROPERTY TYPE	Industrial building
PRICE	\$1,449,000
ZONING	M-1D
ACRES	±.67 acres
BUILDING SIZE	±6,000 SF
YEAR BUILT	1990

HIGHLIGHTS

- Ideal location for industrial with central valley location
- Fantastic proximity to interstate and ease of access
- Clean, well constructed building
- Two roll up doors (12 and 14 feet)
- Ability to drive through
- ±13,000 SF fully fenced yard
- Ample room to expand building
- Back half has 16ft ceilings
- Machine shop business also available if desired

This information, while not guaranteed, is from sources we believe to be reliable.
This data is subject to price change, corrections, errors, omissions, prior sale, and/or withdrawal.



BRIAN RALLENS

208.761.0924 | brian@rallensrealty.com

JP SACTH

208.283.0193 | jp@rallensrealty.com

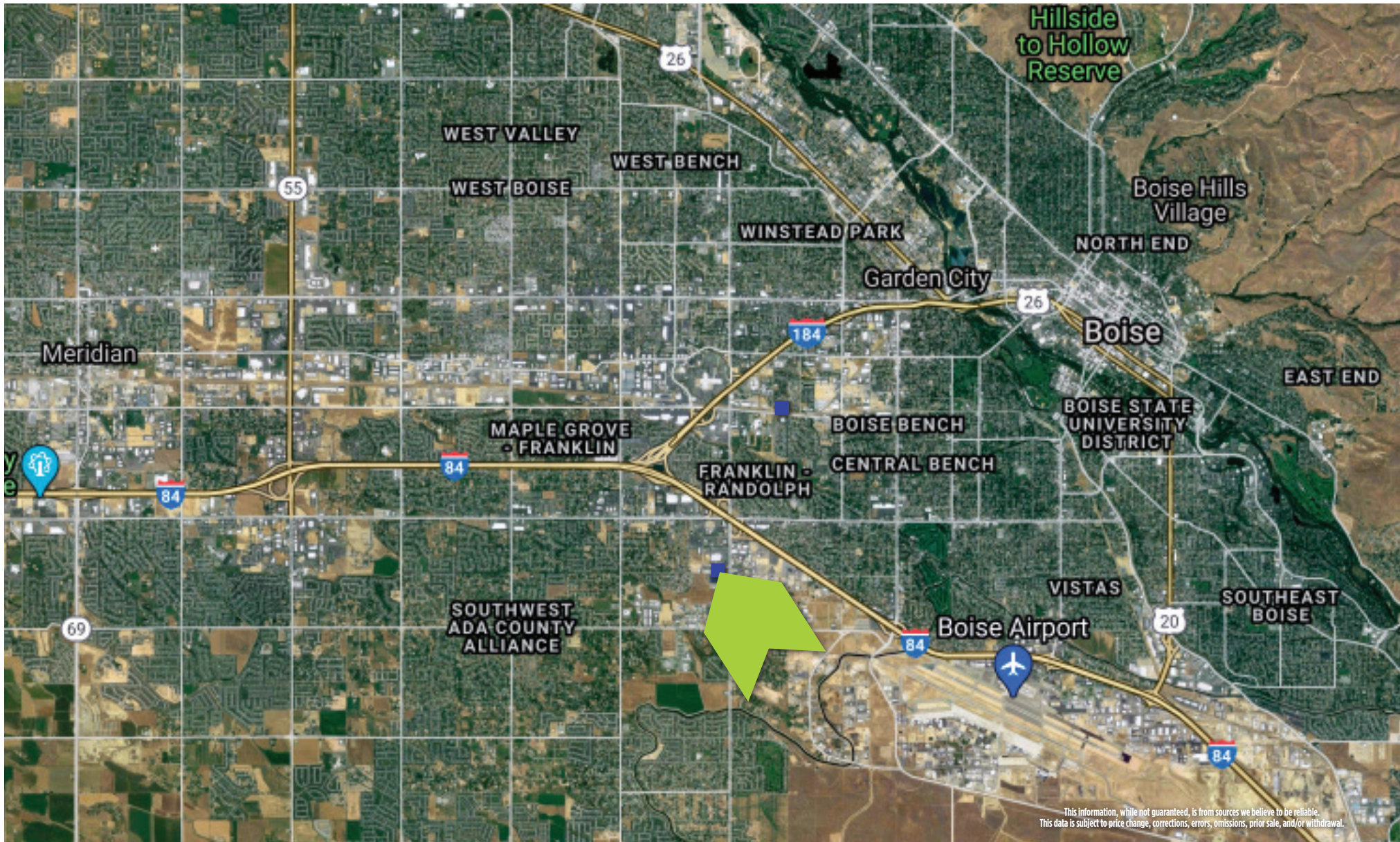
rallensrealty.com

RALLENS REALTY CONSULTANTS | 1520 W WASHINGTON ST BOISE, ID 83702 | 208.996.1055

7545 W LEMHI ST Boise, ID 83709



RALLENS REALTY
CONSULTANTS



BRIAN RALLENS

208.761.0924 | brian@rallensrealty.com

JP SACTH

208.283.0193 | jp@rallensrealty.com

rallensrealty.com

7545 W LEMHI ST Boise, ID 83709



RALLENS REALTY
CONSULTANTS



BRIAN RALLENS

208.761.0924 | brian@rallensrealty.com

JP SACHT

208.283.0193 | jp@rallensrealty.com

rallensrealty.com

113 E IDAHO AVE Meridian, ID 83642



This information, while not guaranteed, is from sources we believe to be reliable.
This data is subject to price change, corrections, errors, omissions, prior sale, and/or withdrawal.

BRIAN RALLENS
208.761.0924 | brian@rallensrealty.com

JP SACTH
208.283.0193 | jp@rallensrealty.com

rallensrealty.com

7545 W LEMHI ST Boise, ID 83709



This information, while not guaranteed, is from sources we believe to be reliable.
This data is subject to price change, corrections, errors, omissions, prior sale, and/or withdrawal.

BRIAN RALLENS
208.761.0924 | brian@rallensrealty.com

JP SACHT
208.283.0193 | jp@rallensrealty.com

rallensrealty.com