

AN EXCLUSIVE LISTING IN NAMPA, IDAHO

CANYON COUNTY LAKE ESTATES



**PRICE
REDUCTION**

rallensrealty.com



RALLENS REALTY
CONSULTANTS

CANYON COUNTY LAKE ESTATES

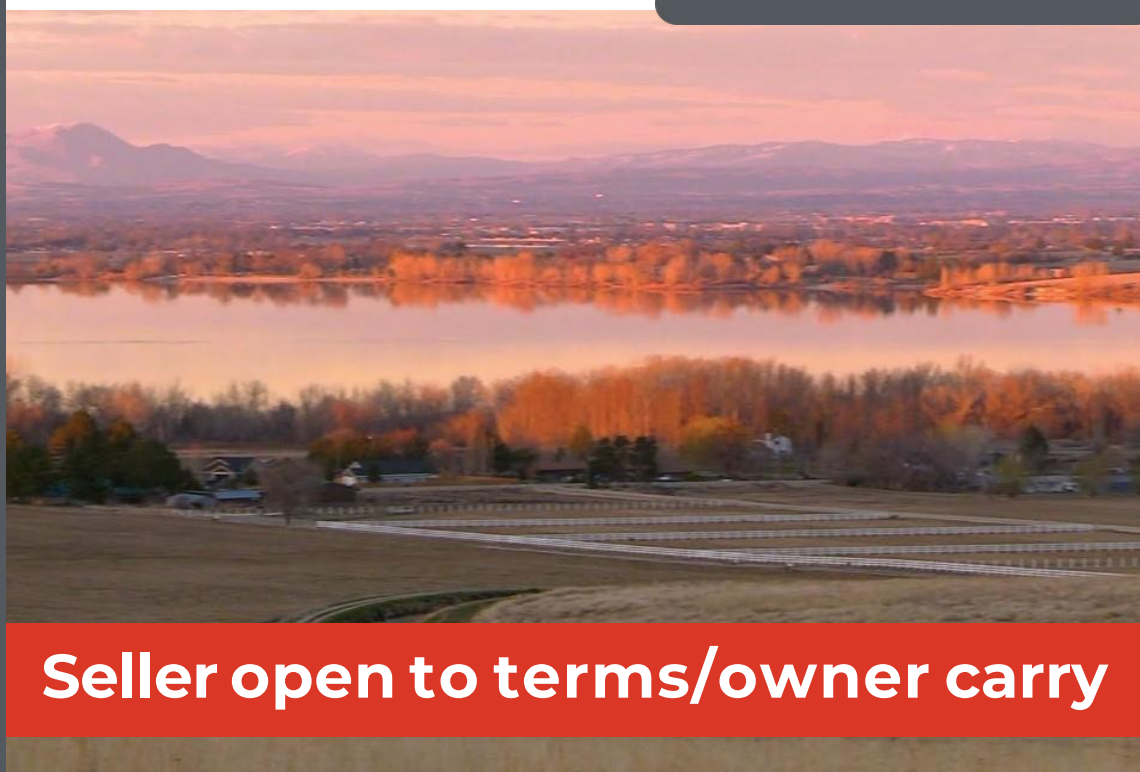
Canyon County Development Land

**PRICE
REDUCTION**

**VIEW THE VIDEO
HERE!**



FOR SALE



Seller open to terms/owner carry

PROPERTY INFORMATION

PROPERTY TYPE	Development Land
ZONING	Rural Residential
UTILITIES	Power, Water
SCHOOL DISTRICT	Vallivue
NEW PRICE	\$4,299,000

HIGHLIGHTS

- Incredible development opportunity for view estate lots
- Highest point on the south side of Lake Lowell
- Already zoned Rural Residential in Canyon County
- Gentle sloping topography with pristine views of Lake Lowell, the Boise Front, and Owyhee Mountains
- Within minutes of Recreation at Lake Lowell and the Snake River
- In the heart of the Snake River Valley Wine Region
- Less than 10 minutes from Nampa City amenities, including grocery, schools, medical, etc.
- Preliminary Plat was approved in 2006 for 101 residential lots on community septic system. Options for individual septic available
- Water rights already in place for full 207 acres, more than sufficient to develop the entire property

This information, while not guaranteed, is from sources we believe to be reliable. This data is subject to price change, corrections, errors, omissions, prior sale, and/or withdrawal



**RALLENS
REALTY**
CONSULTANTS

BRIAN RALLENS

208.761.0924 | brian@rallensrealty.com

RALLENS REALTY CONSULTANTS | 1520 W WASHINGTON ST BOISE, ID 83702 | 208.996.1055

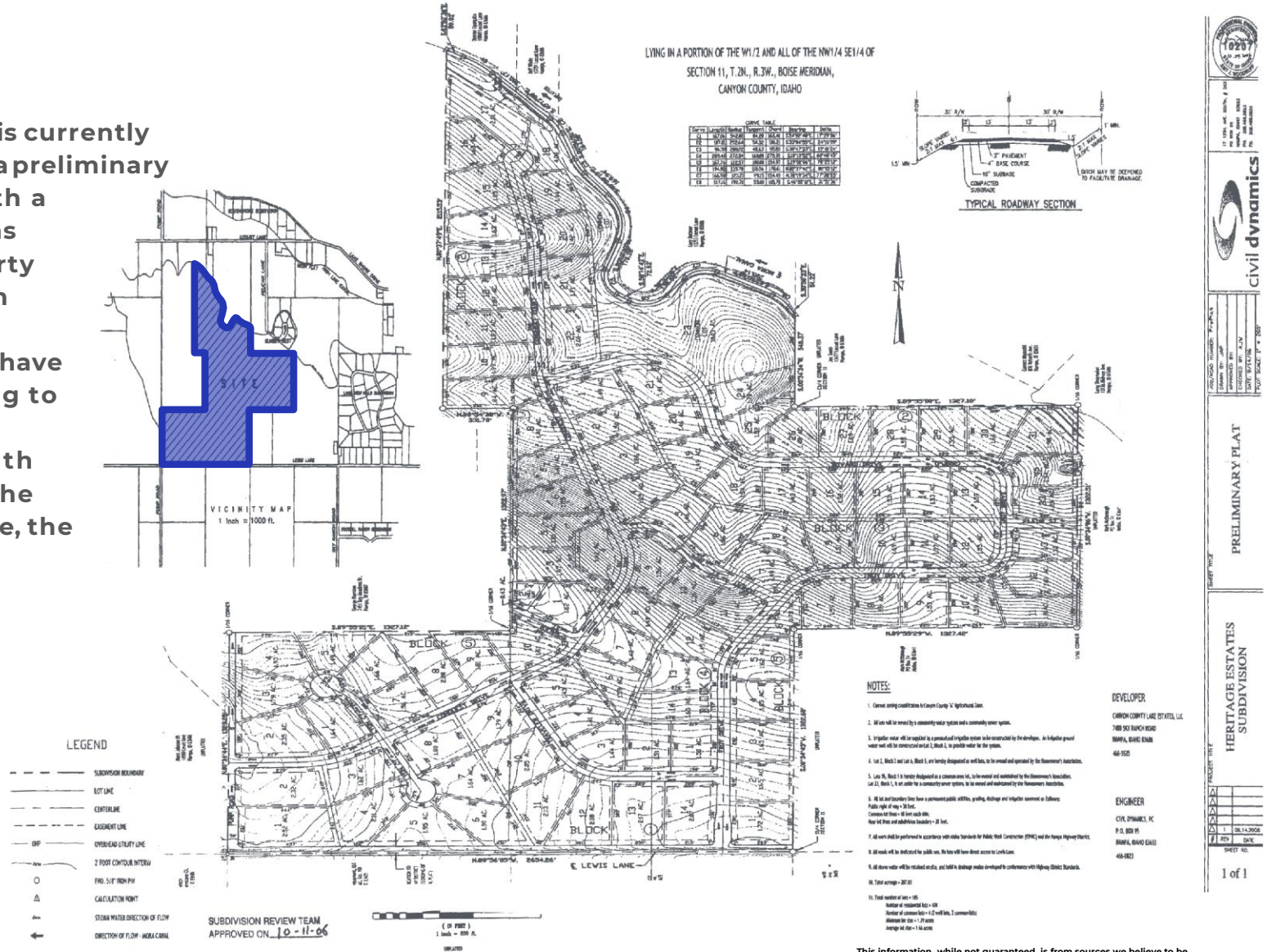
rallensrealty.com

CANYON COUNTY LAKE ESTATES



PREVIOUS APPROVALS/ PLAT OPTIONS

Canyon County Lake Estates is currently zoned Rural Residential, and a preliminary plat for 101 residential lots with a community septic system was approved in 2006. The property could also be developed with individual septic systems if desired. Surrounding parcels have been able to obtain R-1 zoning to allow greater density which could be pursued as well. With unprecedented views from the highest point around the lake, the opportunity is endless.



BRIAN RALLENS
208.761.0924 | brian@rallensrealty.com

rallensrealty.com

This information, while not guaranteed, is from sources we believe to be reliable. This data is subject to price change, corrections, errors, omissions, prior sale, and/or withdrawal

CANYON COUNTY LAKE ESTATES



WATER RIGHTS

With ample water rights already secured for the entire 207 acres, Canyon County Lake Estates is ready for development. Water right #63-32244 allows for 13,000 gallons per day for the contemplated 101 residences under the previous plat. Water rights #63-3597H, #63-31535, #63-31800, and #63-31802 all provide additional irrigation rights for the property and ample ability to provide the needed resources for a successful community. The property is also outside of the Nitrate Priority Area, making this the preferred development area in the region.

With entitlements already in place, water rights already obtained, and favorable conditions in the area, Canyon County Lake Estates is a prime opportunity for a one of a kind, turn key development on one of the most unique pieces of property available in the region.

BRIAN RALLENS

208.761.0924 | brian@rallensrealty.com

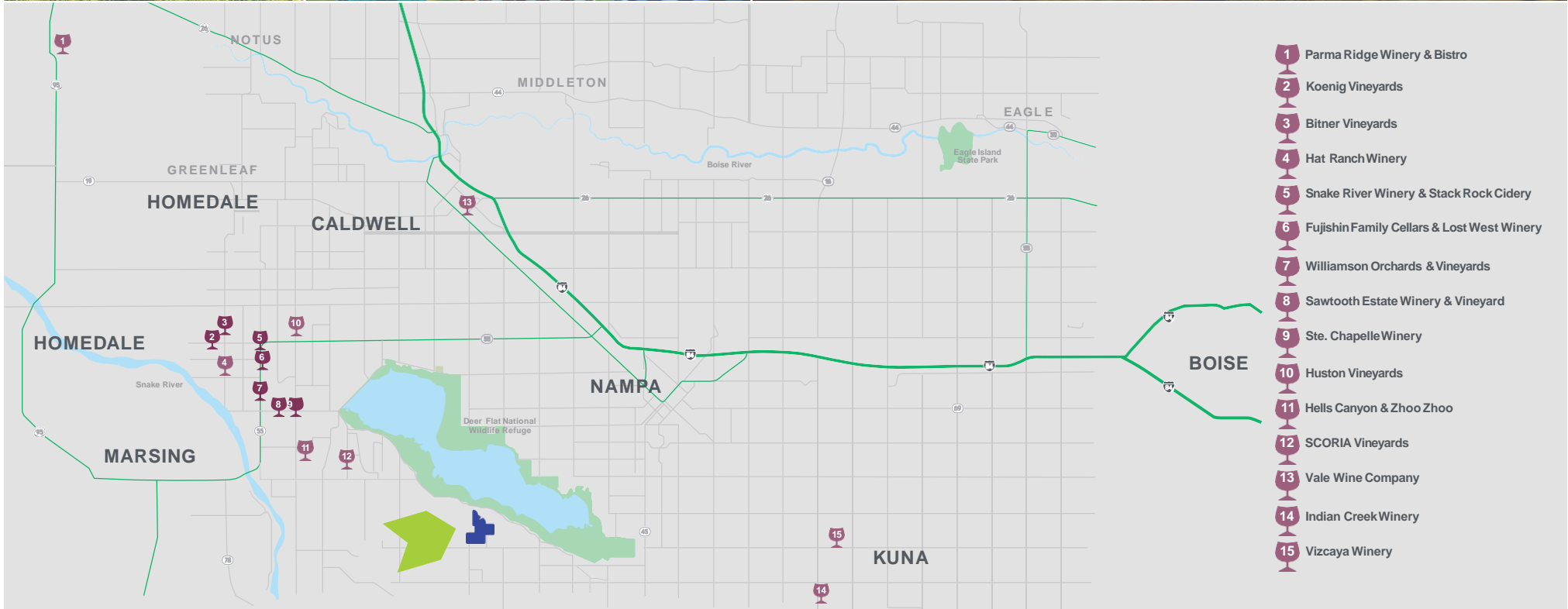
rallensrealty.com

CANYON COUNTY LAKE ESTATES



IDAHO'S WINE REGION

Canyon County Lake Estates is nestled right in the heart of the **Snake River Valley Wine Region**, one of the preeminent up and coming wine regions in the nation. Endless activities including summer concerts, tastings of all kinds, biking tours, and other social gatherings make the Snake River Valley Wine Region a thriving and vibrant area to live, and will provide an incredible lifestyle for the future residents of this unique development.



BRIAN RALLENS

208.761.0924 | brian@rallensrealty.com

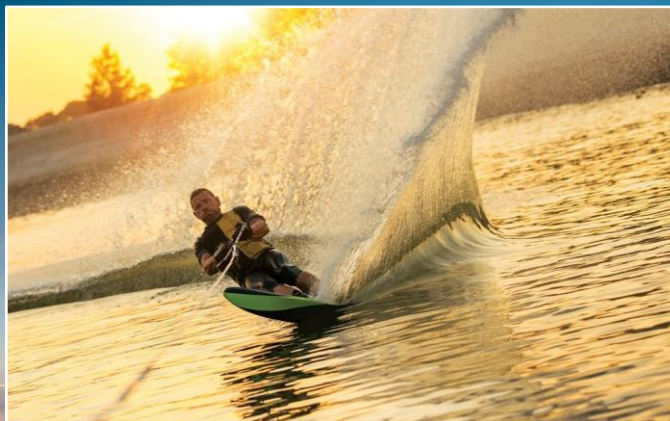
rallensrealty.com

CANYON COUNTY LAKE ESTATES



LAKE LIFE

Lake Lowell and the **Deer Flat National Wildlife Refuge** provide year-round recreation for outdoor activities of all kinds. Boating and waterskiing can be enjoyed in the summer along with the abundant picnic areas, parks, and swimming. Fishing, waterfowl and upland hunting, and wildlife observation can be enjoyed year round as permitted.



BRIAN RALLENS

208.761.0924 | brian@rallensrealty.com

rallensrealty.com

CANYON COUNTY LAKE ESTATES



OUTDOOR RECREATION

The **Snake River Canyon** is one of the true treasures of the western United States and only a 15 minute drive from Canyon County Lake Estates. Recreation opportunities abound, and the breathtaking scenery does not disappoint with wildlife of all kinds in the Canyon and skies above. Hiking, fishing, hunting, camping, trail riding, jet boating and rock climbing are just a few of the exciting adventures afforded by this incredible feature of Southern Idaho, and add greatly to the allure of living in the future Canyon County Lake Estates development.



BRIAN RALLENS

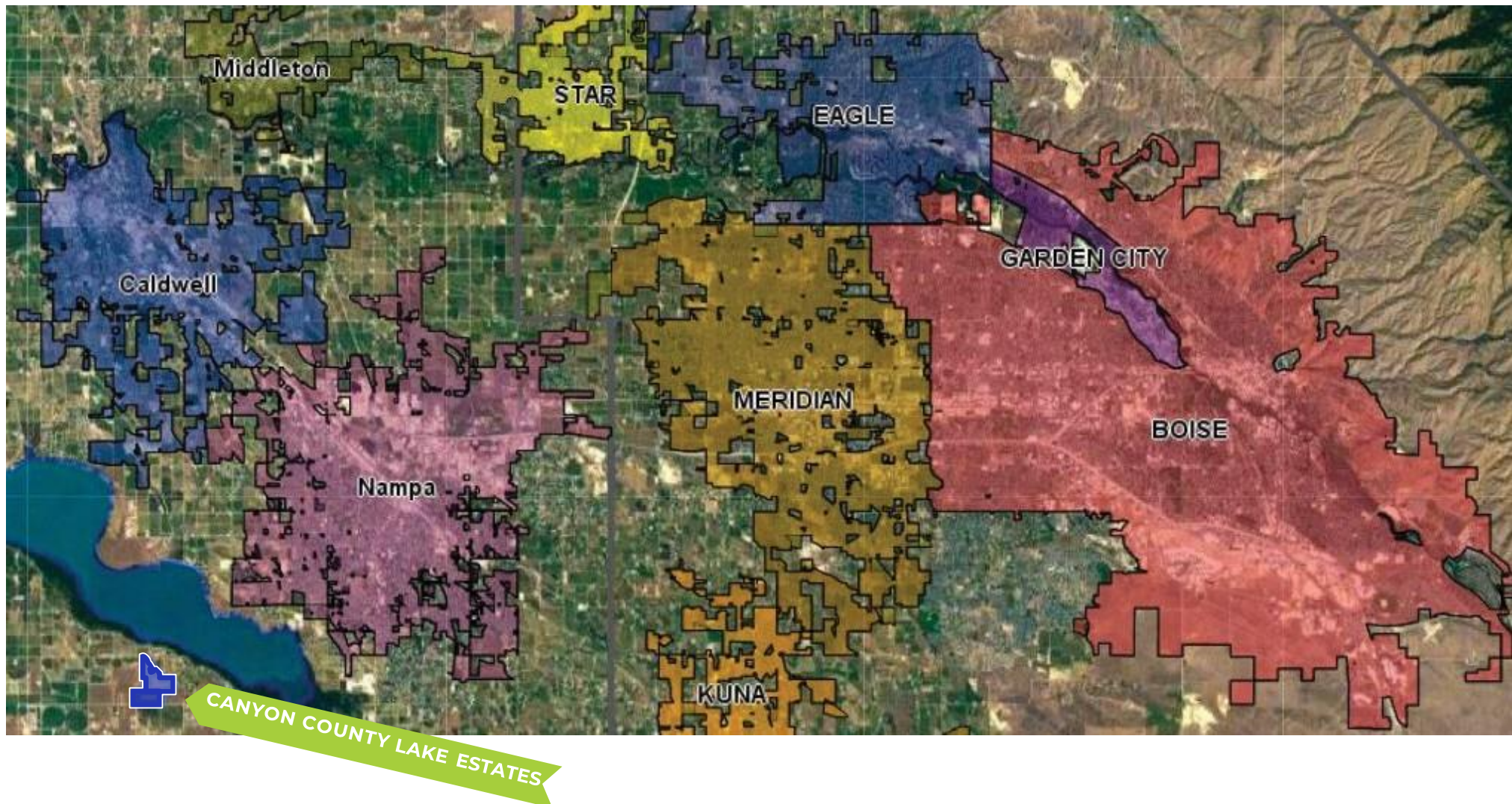
208.761.0924 | brian@rallensrealty.com

rallensrealty.com

CANYON COUNTY LAKE ESTATES



WIDE VALLEY AERIAL



This information, while not guaranteed, is from sources we believe to be reliable. This data is subject to price change, corrections, errors, omissions, prior sale, and/or withdrawal

BRIAN RALLENS

208.761.0924 | brian@rallensrealty.com

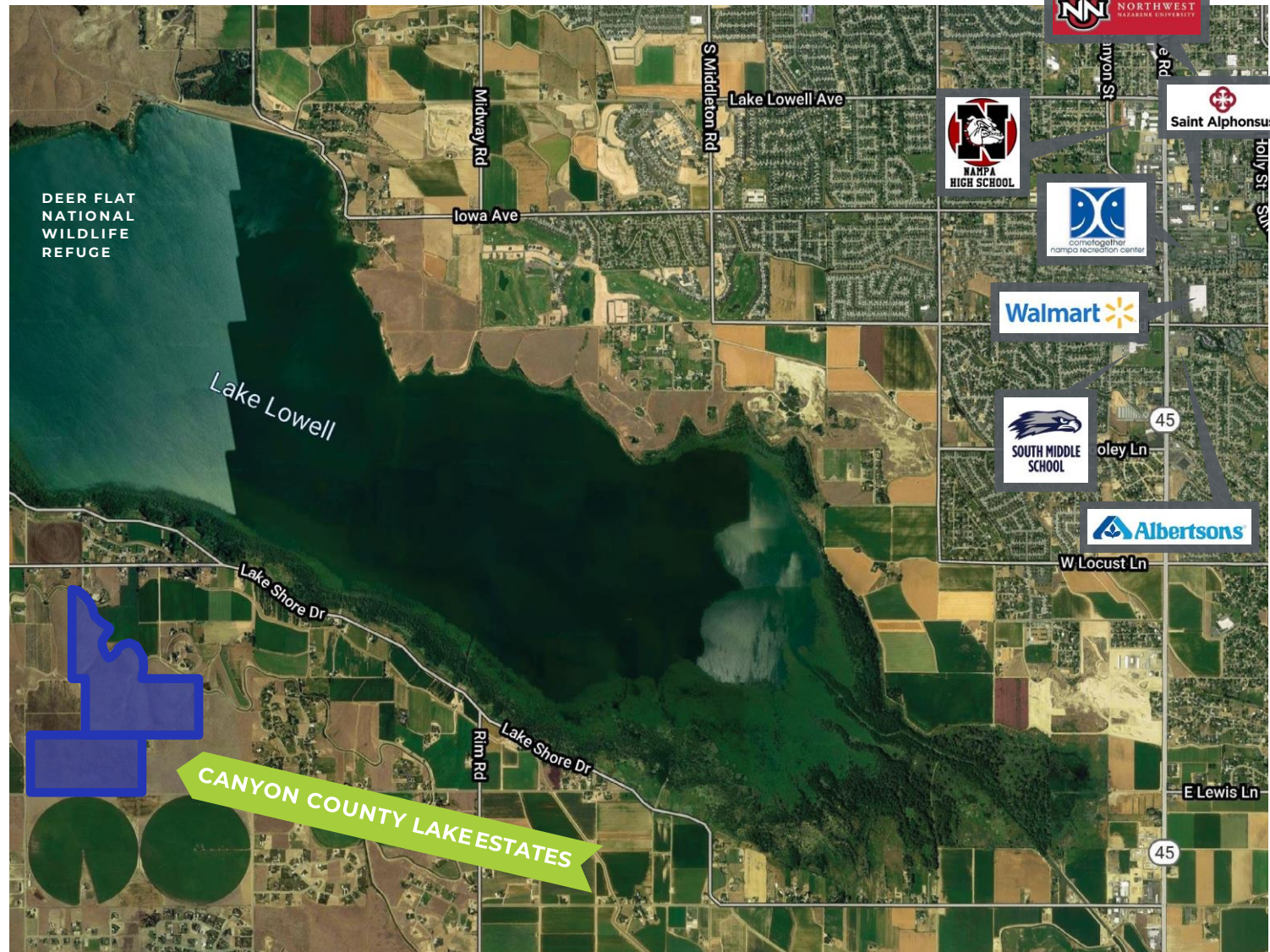
rallensrealty.com

CANYON COUNTY LAKE ESTATES



NAMPA

Only a ten minute drive from the heart of Nampa's retail district, hospitals, and schools, Canyon County Lake Estates provides all of the amenities and conveniences of urban living while maintaining an extremely picturesque and rural feel. With nearly 100,000 citizens, Nampa is the largest city in Canyon County and the third largest in the State of Idaho. Not only does Nampa provide amenities, arts, culture, healthcare and schools, but Downtown Boise is only 30 miles from Canyon County Lake Estates. All of the civic and recreational opportunities available in the burgeoning Treasure Valley are just a short drive from the development. It is truly this intersection of urban and rural living that sets Canyon County Lake Estates apart as a premier development opportunity.



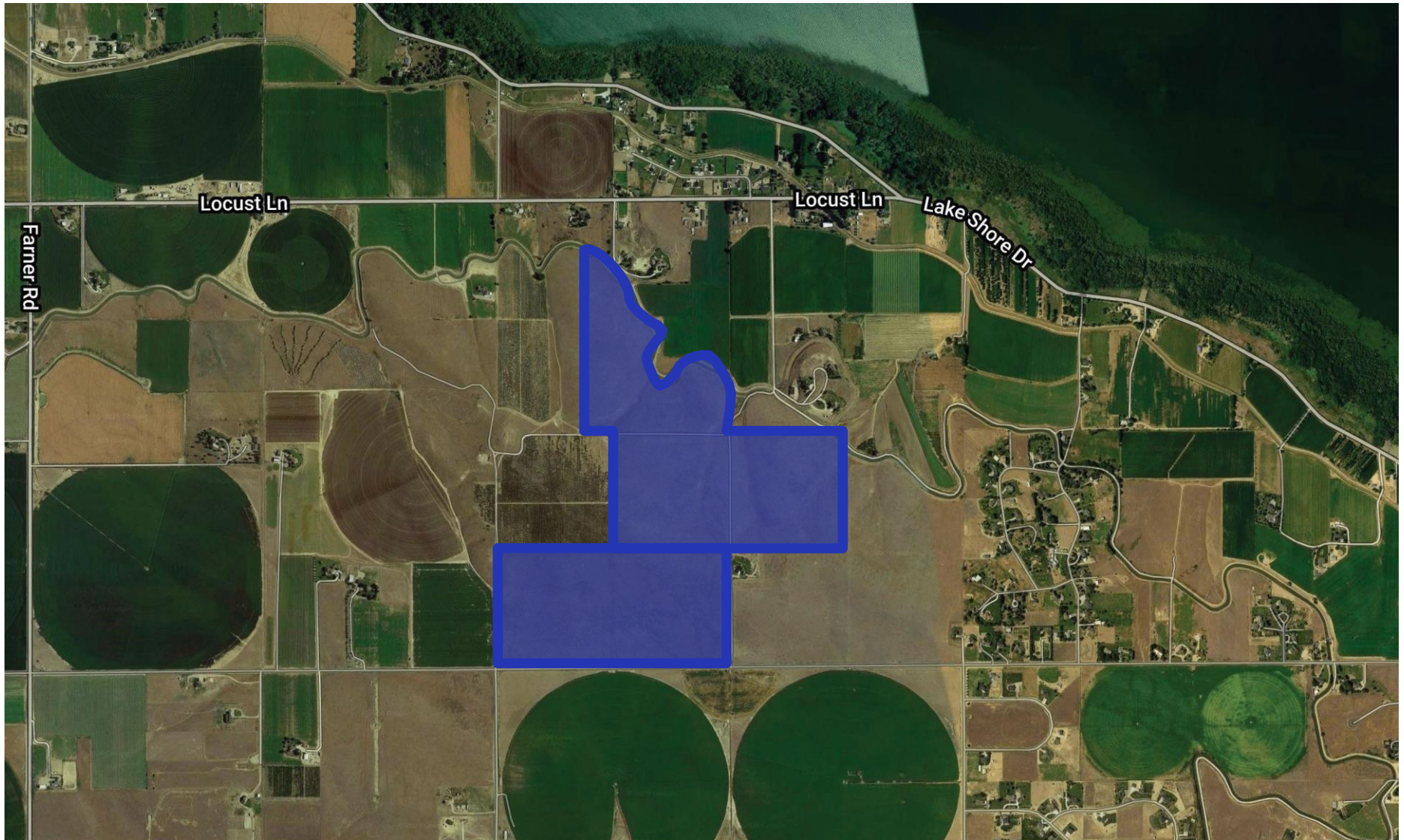
This information, while not guaranteed, is from sources we believe to be reliable. This data is subject to price change, corrections, errors, omissions, prior sale, and/or withdrawal

BRIAN RALLENS

208.761.0924 | brian@rallensrealty.com

rallensrealty.com

CANYON COUNTY LAKE ESTATES



This information, while not guaranteed, is from sources we believe to be reliable. This data is subject to price change, corrections, errors, omissions, prior sale, and/or withdrawal

BRIAN RALLENS

208.761.0924 | brian@rallensrealty.com

rallensrealty.com

CANYON COUNTY LAKE ESTATES



WHY THE TREASURE VALLEY*

Canyon County Lake Estates benefits from the vibrant economy and booming real estate market in the greater Boise metropolitan area known as The Treasure Valley. Lifestyle, family-oriented values, thriving business culture, and the boundless recreational opportunities of Idaho are all reasons that people are moving here in droves. Please see the following information to help tell the incredible story of our uniquely wonderful Valley, sourced from the Boise Valley Economic Partnership. Canyon County Lake Estates is an amazing opportunity to participate in our thriving market.

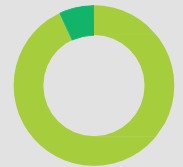
730K

Population Growth

Over 730,000 people live in the Boise Metro and we're welcoming more every day. In fact, we're the second-fastest growing metro in the nation* with a population growing three times faster than the national average.

This rapid growth – both from immigration and retention – is fueled by the draw of recreational and cultural amenities occurring simultaneously with the economic pull of strong jobs.

93% of the migration
is arriving from
outside of Idaho



Net Migration

Net migration measures the migration both into and out-of the Boise Metro. The Boise Metro has the fastest net migration rate of any US Metro* outside of Florida. Ninety-three percent of the migration, on net, is arriving from outside of Idaho. Of these out-of-state movers, over 60 percent, on net, are made up of people under 50 years old, and one in three new residents, on net, is between 20 and 49 years old.

BRIAN RALLENS

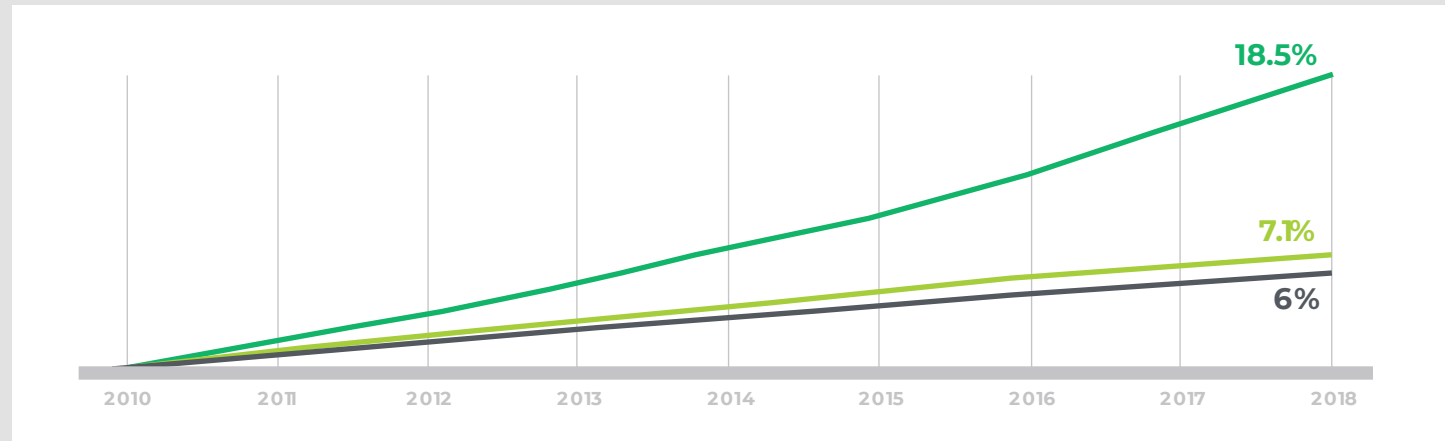
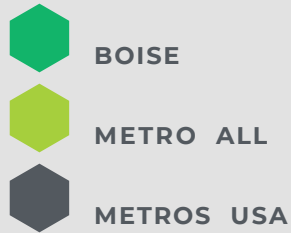
208.761.0924 | brian@rallensrealty.com

rallensrealty.com

CANYON COUNTY LAKE ESTATES



Population Growth 2010–2018



Largest Private Sector Employers

From corporate headquarters to flourishing startups, the Boise Metro has proven to be a place where companies can put down roots and prosper.



Saint Luke's Health System
Idaho-based, not-for-profit health system.
7,000-7,999 employees



Micron Technology, Inc.
Manufacturing & Technology.
5,000-5,999 employees



Saint Alphonsus Health System
A four-hospital regional, faith-based Catholic ministry providing award winning cardiac care, ER, urgent care, women's health, orthopedic care and clinics.
5,000-5,999 employees



Albertsons
Headquarters for a national grocery chain.
3,000-3,999 employees



Walmart
Retail trade.
3,000-3,999 employees



J.R. Simplot Company
Headquarters and processing plant for national food processor
2,000-2,999 employees



HP Inc
The world's largest technology company, HP established its printer division in Boise in 1973. HP Inc. & HP Enterprise both of which are located here.
1,000-1,999 employees

BRIAN RALLENS
208.761.0924 | brian@rallensrealty.com

rallensrealty.com