

FOR SALE



Property Information

PROPERTY TYPE	Industrial
ZONING	Industrial
Land SIZE	+/- 4.81 Acres
UTILITIES	All available
PRICE	\$795,000

HIGHLIGHTS

- Industrial saw sharpening and rebuilding
- 30-year established business with loyal customer base
- All machinery and vehicles included
- Two 12 foot roll up doors
- Blue sky opportunity with booming construction industry
- Owners willing to stay on for smooth transition
- Financials available with signed confidentiality agreement

**PLEASE CALL
FOR SHOWING INSTRUCTIONS.
DO NOT DISTURB BUSINESS.**

This information, while not guaranteed, is from sources we believe to be reliable. This data is subject to price change, corrections, errors, omissions, prior sale, and/or withdrawal

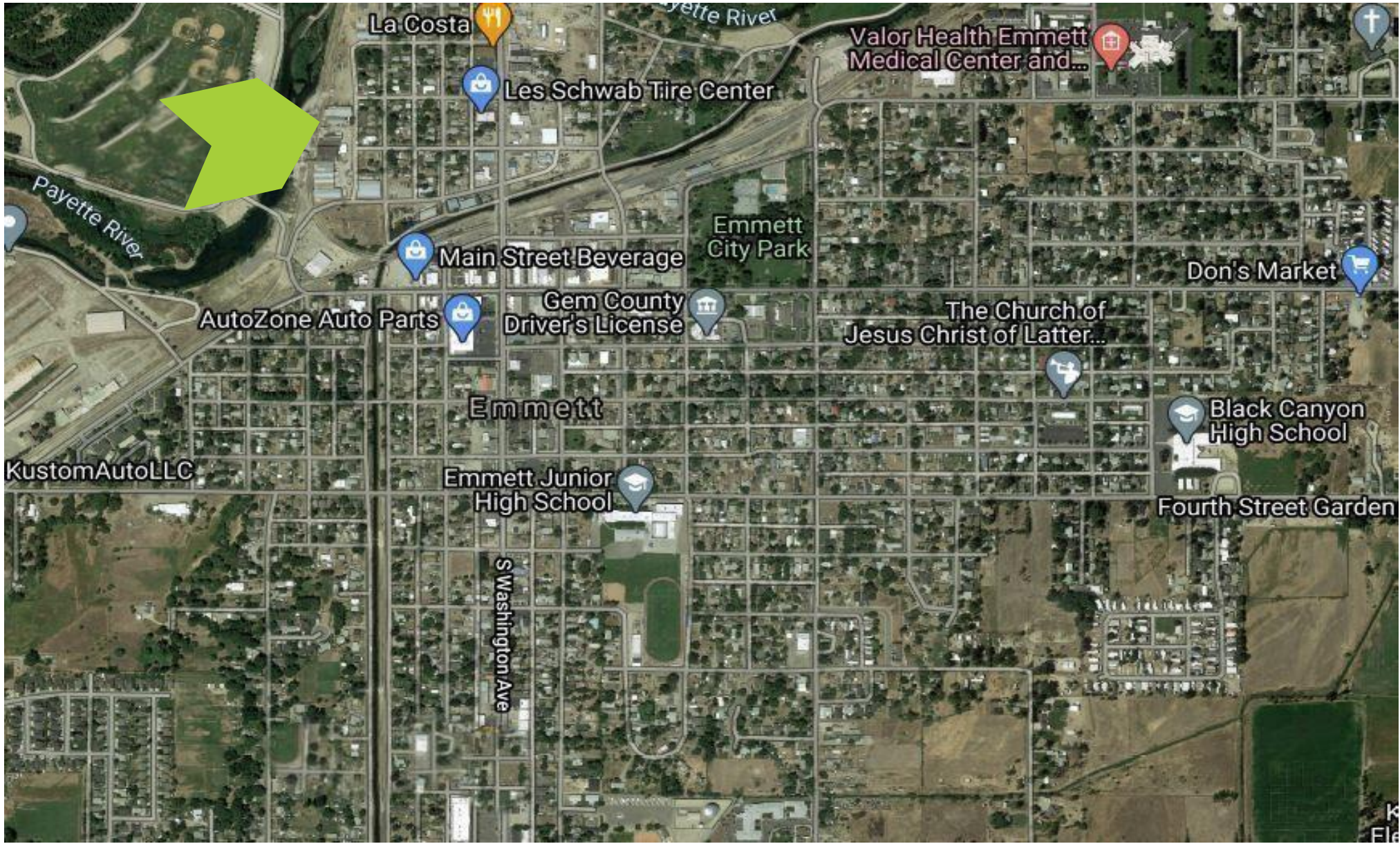


BRIAN RALLENS

208.761.0924 | brian@rallensrealty.com

rallensrealty.com

351 W DION ST Emmett, ID 83617



BRIAN RALLENS

208.761.0924 | brian@rallensrealty.com

rallensrealty.com