

FOR SALE



### PROPERTY INFORMATION

<b>PROPERTY TYPE:</b>	Development Land for Sale
<b>LOCATION:</b>	W Lake Hazel Rd between Linder Rd & Meridian Rd
<b>ZONING:</b>	RUT
<b>MERIDIAN COMP PLAN:</b>	Medium-Density Residential
<b>ACRES:</b>	35.29
<b>PRICE</b>	<b>\$4,300,000</b>

### HIGHLIGHTS

- Located in the rapidly-growing South Meridian/North Kuna corridor
- Excellent opportunity for a long-term investor or 1031 Buyer
- 5,500 SF home on the property features 5 bedrooms and 3.5 bathrooms
- Home is in excellent condition and will have significant resale value for a developer

This information, while not guaranteed, is from sources we believe to be reliable. This data is subject to price change, corrections, errors, omissions, prior sale, and/or withdrawal.

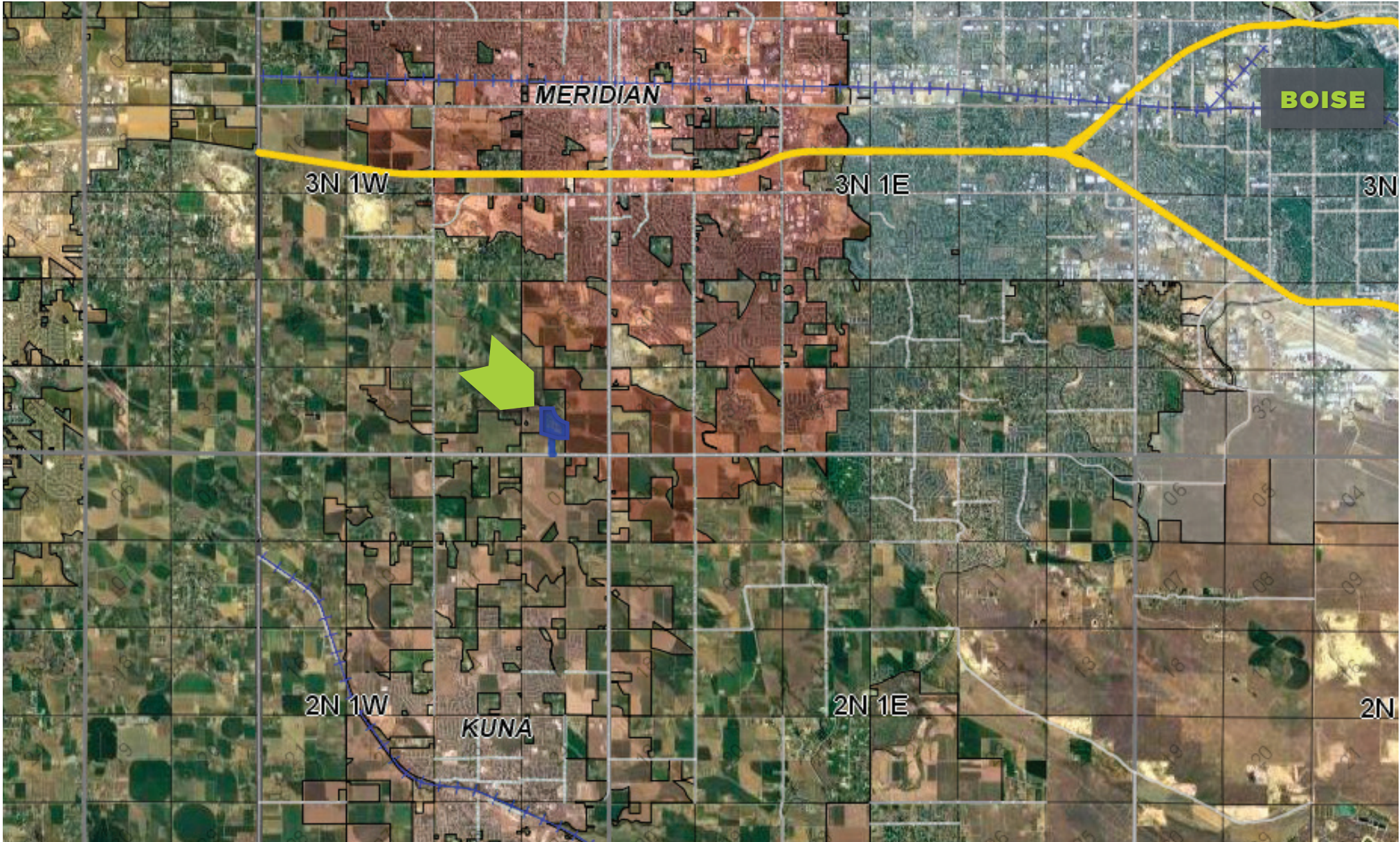


**BEN FULCHER**  
208.859.7407 | ben@rallensrealty.com

**BRIAN RALLENS**  
208.761.0924 | brian@rallensrealty.com

[rallensrealty.com](http://rallensrealty.com)

**6150 S FRANK AND WILMA LN** MERIDIAN, ID 83642



**BEN FULCHER**

208.859.7407 | [ben@rallensrealty.com](mailto:ben@rallensrealty.com)

**BRIAN RALLENS**

208.761.0924 | [brian@rallensrealty.com](mailto:brian@rallensrealty.com)

[rallensrealty.com](http://rallensrealty.com)