



PROPERTY INFORMATION

LOCATION	I-84 Exit 57, W on Gowen Rd, S on Eisenman Rd
PROPERTY TYPE	Industrial Land
ZONING	M-1D
LAND SIZE	±2.86 acres
GROUND LEASE	Contact Agent
PRICE	Contact Agent

HIGHLIGHTS

- Adjacent to Idaho Ice World
- Excellent I-84 frontage and visibility
- Seller does not own the billboards located on the property

This information, while not guaranteed, is from sources we believe to be reliable. This data is subject to price change, corrections, errors, omissions, prior sale, and/or withdrawal.

A division of
NAISelect

BEN FULCHER
208.859.7407 | bfulcher@naiselect.com

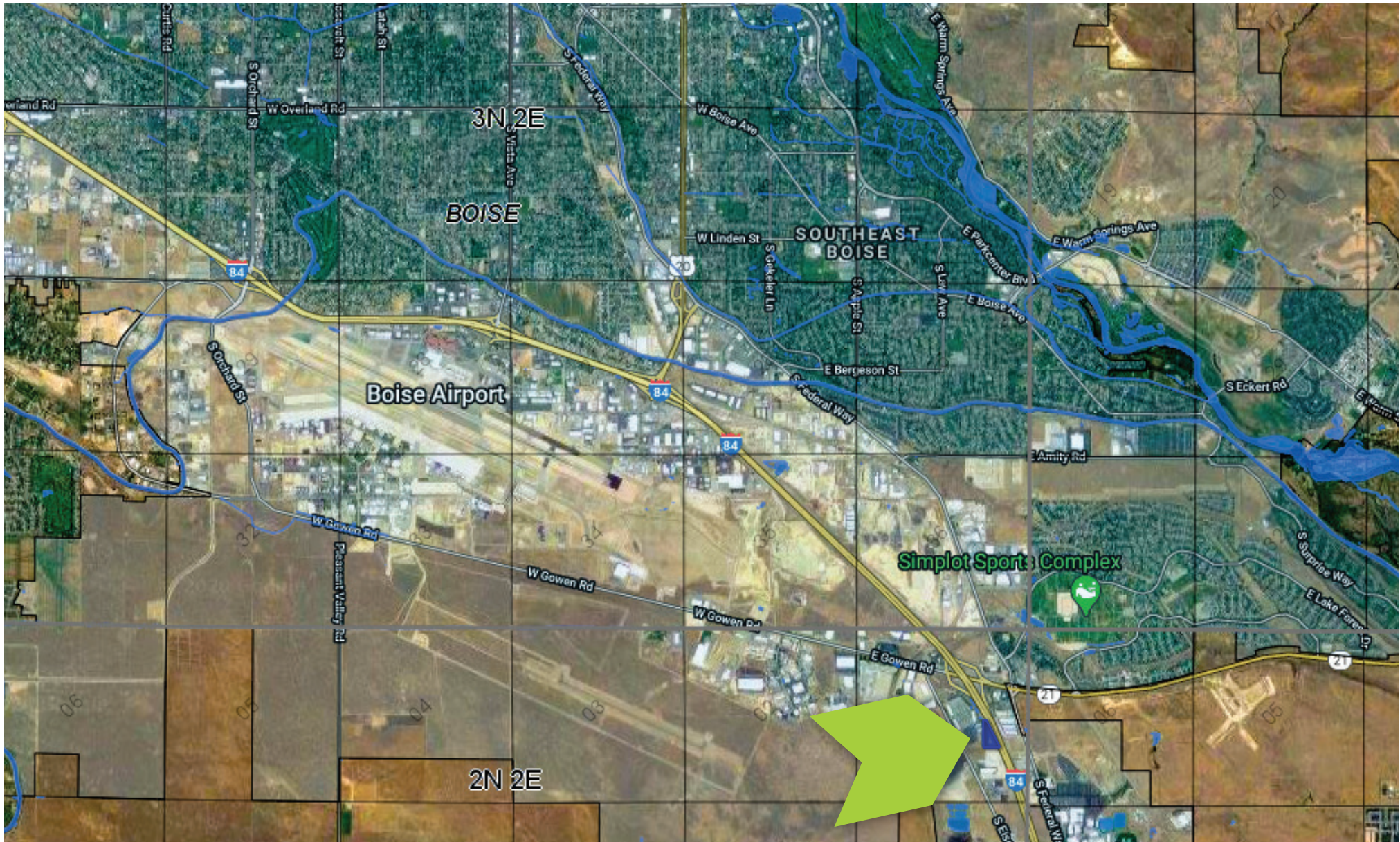
BRIAN RALLENS
208.761.0924 | brian@rallensrealty.com

RALLENS REALTY
CONSULTANTS

7090 S EISENMAN ROAD Boise, Idaho 83716

A division of

NAISelect



BEN FULCHER

208.859.7407 | bfulcher@naiselect.com

BRIAN RALLENS

208.761.0924 | brian@rallensrealty.com



rallensrealty.com