

FOR SALE



### PROPERTY INFORMATION

**PROPERTY TYPE:** Development Land for Sale  
**LOCATION:** W Lake Hazel Rd between Linder Rd & Meridian Rd  
**ZONING:** RUT  
**MERIDIAN COMP PLAN:** Medium-Density Residential  
**ACRES:** 35.29  
**PURCHASE PRICE**  
Price for land: **\$97,000/acre**  
+ Estimated value of house

**TOTAL PRICE: \$4,100,000**

### HIGHLIGHTS

- Located in the rapidly-growing South Meridian/North Kuna corridor
- Excellent opportunity for a long-term investor or 1031 Buyer
- 5,500 SF home on the property features 5 bedrooms and 3.5 bathrooms
- Home is in excellent condition and will have significant resale value for a developer

This information, while not guaranteed, is from sources we believe to be reliable. This data is subject to price change, corrections, errors, omissions, prior sale, and/or withdrawal.

A division of  
**NAISelect**

**BEN FULCHER**  
208.859.7407 | bfulcher@naiselect.com

**BRIAN RALLENS**  
208.761.0924 | brian@rallensrealty.com

**RALLENS REALTY**  
CONSULTANTS

# 6150 S FRANK AND WILMA LN MERIDIAN, ID 83642

A division of  
**NAISelect**

Conceptual Site  
Plan: 135 lots



**BEN FULCHER**

208.859.7407 | bfulcher@naiselect.com

**BRIAN RALLENS**

208.761.0924 | brian@rallensrealty.com

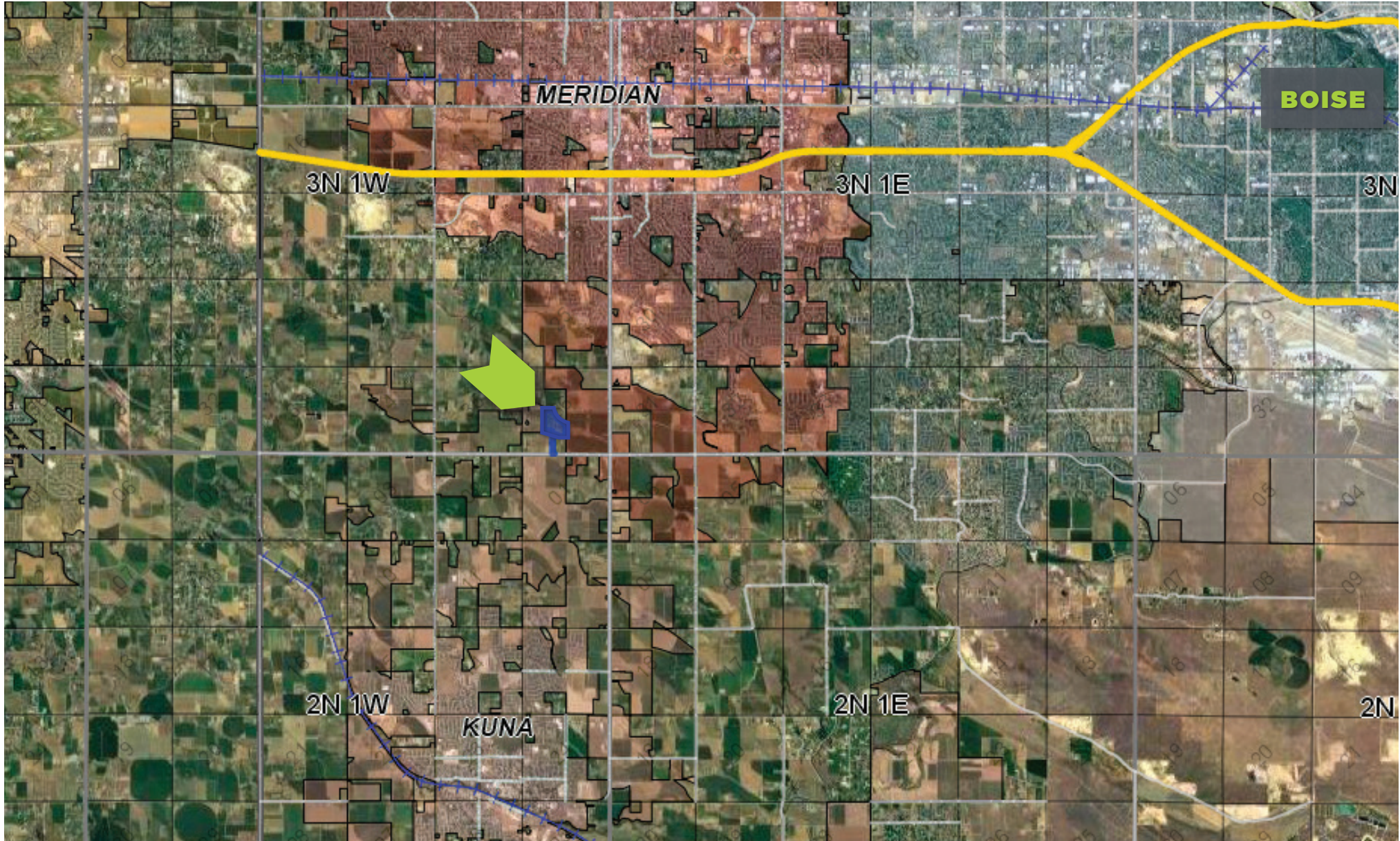


rallensrealty.com

6150 S FRANK AND WILMA LN MERIDIAN, ID 83642

A division of

**NAISelect**



**BEN FULCHER**

208.859.7407 | bfulcher@naiselect.com

**BRIAN RALLENS**

208.761.0924 | brian@rallensrealty.com



rallensrealty.com