

0 MIDDLETON RD Caldwell, ID 83605

Development Land for Sale

FOR SALE



PROPERTY INFORMATION

PROPERTY TYPE	Development Land
PRICE	\$2,613,600
ACRES	4 acres

HIGHLIGHTS

- Property is on the hard-southwest corner of Highway 20/26 and Middleton Rd.
- Ideal corner lot with traffic signal
- Kitty corner from Jackson's gas station
- City of Middleton is 2 miles North of property
- Crunch Fitness 1 mile away to the West
- 1 mile to the West is Sky Ranch Business Park
- Only 2 miles to I-84

This information, while not guaranteed, is from sources we believe to be reliable. This data is subject to price change, corrections, errors, omissions, prior sale, and/or withdrawal.

A division of
NAISelect

BRIAN RALLENS

208.761.0924 | brian@rallensrealty.com

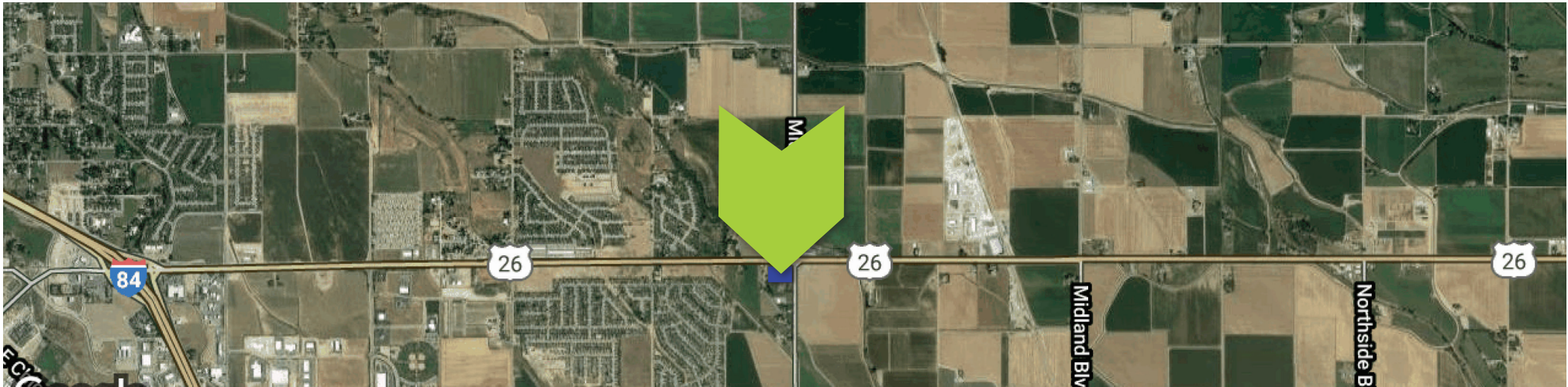
NORM BROWN

208.866.2450 | norm@rallensrealty.com

RALLENS REALTY
CONSULTANTS

0 MIDDLETON RD Caldwell, ID 83605

A division of
NASelect



This information, while not guaranteed, is from sources we believe to be reliable.
This data is subject to price change, corrections, errors, omissions, prior sale, and/or withdrawal.

BRIAN RALLENS

208.761.0924 | brian@rallensrealty.com

NORM BROWN

208.866.2450 | norm@rallensrealty.com



rallensrealty.com

0 MIDDLETON RD Caldwell, ID 83605

A division of

RAISelect



This information, while not guaranteed, is from sources we believe to be reliable. This data is subject to price change, corrections, errors, omissions, prior sale, and/or withdrawal.

BRIAN RALLENS

208.761.0924 | brian@rallensrealty.com

NORM BROWN

208.866.2450 | norm@rallensrealty.com



rallensrealty.com