

FOR SALE



### PROPERTY INFORMATION

**PRICE** \$323,250

**ACRES** 1.25 acres

### HIGHLIGHTS

- Prime land with plenty of potential.
- Zoning allows a wide range of uses including but not limited to: Car sales, Hotel, Gym, Restaurant, or General Retail.
- Great Hwy 95 Frontage

This information, while not guaranteed, is from sources we believe to be reliable. This data is subject to price change, corrections, errors, omissions, prior sale, and/or withdrawal.

A division of  
**NAISelect**

**BRIAN RALLENS**

208.761.0924 | [brian@rallensrealty.com](mailto:brian@rallensrealty.com)

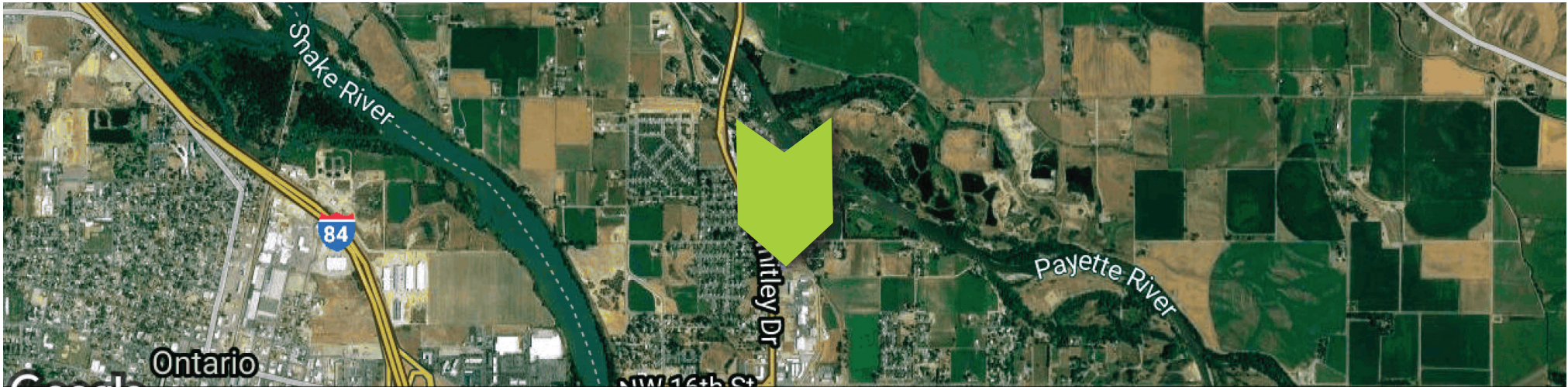
**NORM BROWN**

208.866.2450 | [norm@rallensrealty.com](mailto:norm@rallensrealty.com)

**RALLENS REALTY**  
CONSULTANTS

**2208 N WHITLEY DR** Fruitland, ID 83619

A division of  
**NAISelect**



This information, while not guaranteed, is from sources we believe to be reliable.  
This data is subject to price change, corrections, errors, omissions, prior sale, and/or withdrawal.

**BRIAN RALLENS**

208.761.0924 | [brian@rallensrealty.com](mailto:brian@rallensrealty.com)

**NORM BROWN**

208.866.2450 | [norm@rallensrealty.com](mailto:norm@rallensrealty.com)



**rallensrealty.com**